

**SINGER**  
**9110/9113/9117/9124**

# LIST OF PARTS

## *Sewing Machine Series*

9110

9113

9117

9124

From the library of: Diamond Needle Corp

by **SINGER**\*



A Publication of Product Support  
International Group Engineering

Part No. 317161-027

Printed in Taiwan

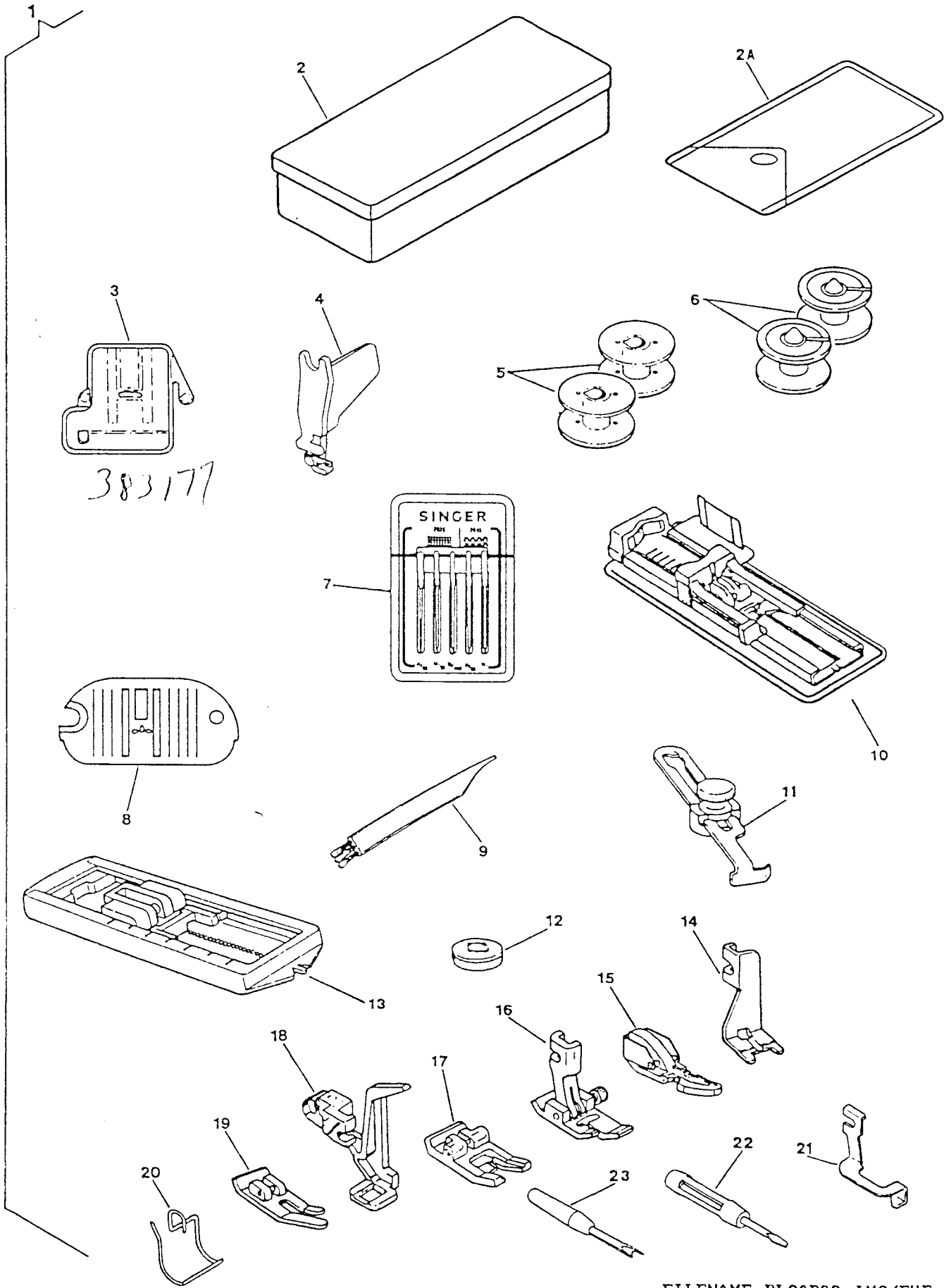
## INDEX

PAGE NO.	SUBASSEMBLY
1, 2	ATTACHMENT SET
3, 4	COVERS AND ADD ONS
5, 8	ARM TOP COVER
9, 10	ARM SHAFT DRIVE SYSTEM
11, 12	HAND WHEEL
13, 14	COAXIAL PRESSER BAR SYSTEM
15, 16	NEEDLE BAR & THREAD TAKE-UP
17, 18	ALPHA FEED
19, 20	HOOK SYSTEM (APOLLO)
21, 22	HOOK AND BOBBIN WINDING SYSTEM (CENTAUR)
23, 28	PATTERN, STITCH LENGTH CONTROL & CAM CONTROLLED FEED
29, 30	DEMAND RESPONSIVE NEEDLE TENSION SYSTEM
31, 36	ELECTRICAL EQUIPMENT

ATTACHMENT SET  
 MODEL: 9110 9113 9117 9124

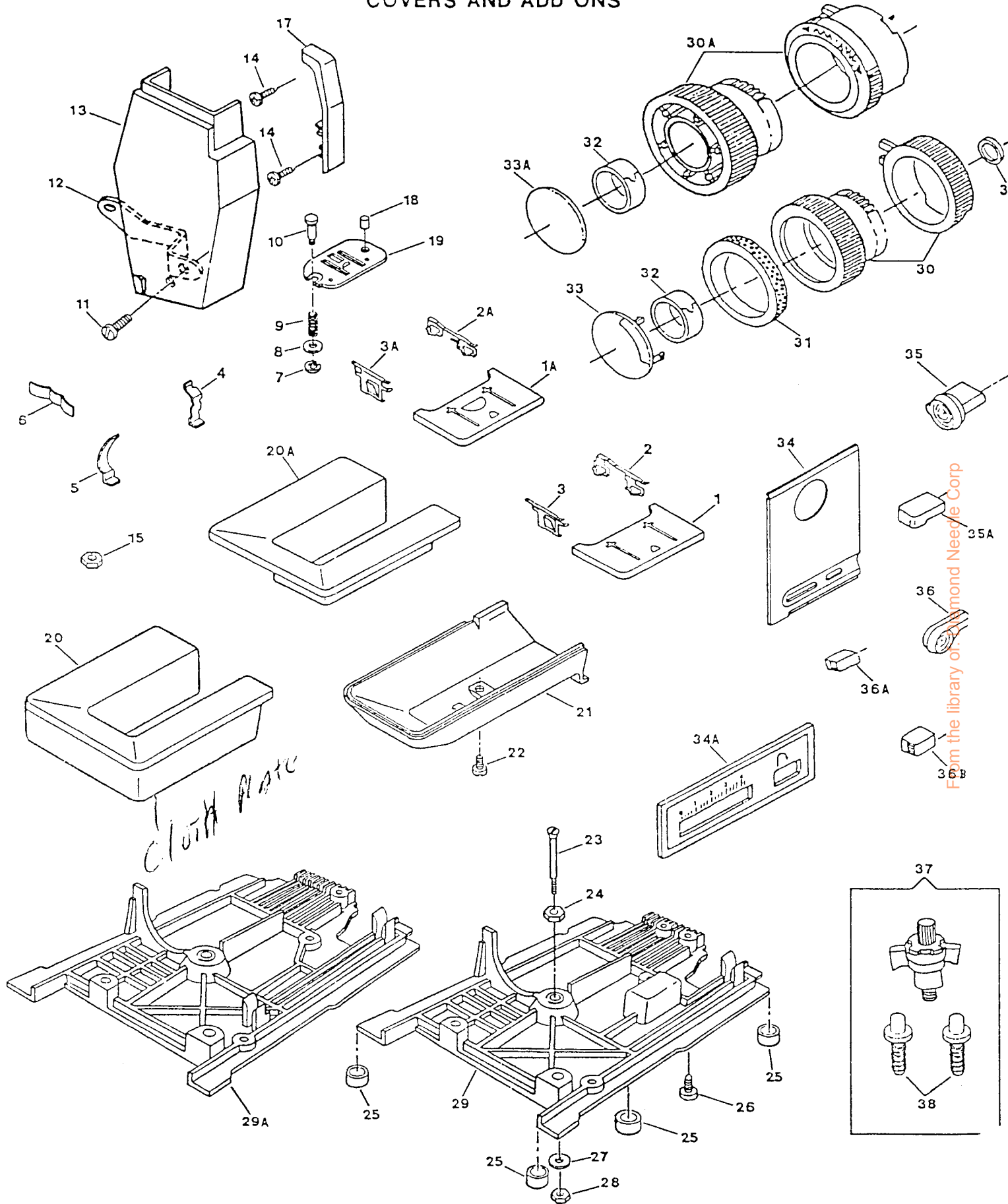
REF. NO.	PART NO.	DESCRIPTION	9	9	9	9
			1	1	1	1
			1	1	1	2
			0	3	7	4
1	313030-140	ATTACHMENT COMPLETE				X
1	313031	ATTACHMENT COMPLETE (IN ARM TOP COVER STORAGE)				X
1	313032	ATTACHMENT COMPLETE (IN ARM TOP COVER STORAGE)				X X
2	402673-455	ACCESSORY BOX COMPLETE (ALT:402673-454)				X
3	313117	FEED COVER PLATE				X X X
4	503277	NEEDLE THREADER COMPLETE				X X
5	172336	BOBBIN (APOLLO)				X
5	172336-001	BOBBIN (APOLLO)				X
6	312956-001	BOBBIN (CENTAUR)				X X X
7	353364	NEEDLE PACK (ALT:384064)				X X X X
8	313066	THROAT PLATE FOR STRAIGHT SEWING				X X
9	546358	LINT BRUSH.				X X X X
10	313093-451	BUTTONHOLE (ONE-STEP) COMPLETE				X X
11	161172	SEAM AND BLINDSTITCH HEM GUIDE COMPLETE				X X X
12	507664-459	ARM SPOOL PIN THREAD LEAD OFF (SMALL, PLASTIC)				X X
13	313992-451	PRESSER FOOT PLATE (4-STEPS) FOR SEWING BUTTONHOLES				X X
14	381066	PRESSER FOOT PLATE FOR BUTTON SEWING				X X
15	171480	PRESSER FOOT PLATE (SNAP-ON) FOR CORDING AND SLIDE FASTENERS COMPLETE				X X X X
16	381491	BLIND HEM PRESSER FOOT ASSEMBLY				X X
17	171463	SPECIAL PURPOSE PRESSER FOOT PLATE (SNAP-ON)				X X X X
18	384037	DARNING AND EMBROIDERY FOOT COMPLETE (PLASTIC)				X X X X
19	161919-111	PRESSER FOOT PLATE (SNAP-ON) FOR STRAIGHT SEWING (ALTERNATE)				X X X X
19	353628	PRESSER FOOT PLATE (SNAP-ON) FOR STRAIGHT SEWING				X X X X
20	421588	FINGER GUARD (FOR CONTINENTAL EUROPE)				X X X X
21	171110	BLINDSTITCH GUIDE				X X X X

Distribution: Darning and Needle Corp.



383177

From the library of: Diamond Needle Corp



COVERS AND ADD ONS  
MODEL: 9110 9113 9117 9124

REF. PART NO.	PART NO.	DESCRIPTION	9	9	9	9
			9	9	9	9
			1	1	1	1
			1	1	1	2
			0	3	7	4
1	314666	BED SLIDE ASSEMBLY COMPLETE (APOLLO)	X			
1A	314109	BED SLIDE ASSEMBLY COMPLETE (ALT:313166)		X	X	X
2	314669	BED SLIDE SPRING (RIGHT)	X			
2A	312779	BED SLIDE SPRING (RIGHT)		X	X	X
3	314670	BED SLIDE SPRING (LEFT) ✓	X			
3A	313108	BED SLIDE SPRING (LEFT)		X	X	X
4	313178	BED SLIDE STOP	X			
5	313179	BED SLIDE STOP SPRING	X			
6	313118	CLOTH PLATE SPRING	X	X	X	X
7	313098	THROAT PLATE PLUNGER RETAINING RING	X	X	X	X
8	549426-451	THROAT PLATE PLUNGER WASHER	X	X	X	X
9	312805	THROAT PLATE PLUNGER SPRING	X	X	X	X
10	312804	THROAT PLATE PLUNGER	X	X	X	X
11	113521-451	FACE PLATE MOUNTING SCREW	X	X	X	X
12	314263	FACE PLATE MOUNTING BRACKET	X	X	X	X
13	314259-004	FACE PLATE COMPLETE	X	X	X	X
14	113470-003	THREAD TAKE-UP COVER MOUNTING SCREW	X	X	X	X
15	313049	BED INSERT NUT	X	X	X	X
17	314718-455	THREAD TAKE-UP COVER	X	X	X	X
18	353624	THROAT PLATE LOCATING PIN	X	X	X	X
19	312777	THROAT PLATE FOR ZIG ZAG SEWING	X	X	X	X
20	317361-451	CLOTH PLATE	X	X	X	X
21	312773-452	BED COVER (TUBULAR)	X	X	X	X
22	354633-452	BED COVER (TUBULAR) SCREW	X	X	X	X
23	313052-451	BOTTOM COVER MOUNTING BOLT	X	X	X	X
24	313173-451	BOTTOM COVER MOUNTING BOLT RETAINING NUT	X	X	X	X
25	313909-451	BED LEG CUSHION	X	X	X	X
26	113455-002	BED COVER PLATE (BOTTOM) SCREW	X	X	X	X
27	314712-451	BOTTOM COVER MOUNTING BOLT WASHER	X	X	X	X
28	313177-452	BOTTOM COVER MOUNTING BOLT MOUNTING NUT	X	X	X	X
29A	314774-003	BED COVER (DUAL VOLTAGE FOR U.S.A./ KOREA /GERMANY & H.K )	X	X	X	X
30	317267-451	PATTERN SELECTOR KNOB AND STITCH BALANCE KNOB ASSEMBLY	X	X	X	X
30A	314239-467	PATTERN SELECTOR KNOB AND STITCH BALANCE KNOB KIT ASSEMBLY (FOR EUROPE)	X			
31	317363-451	RING, PATTERN SELECTOR KNOB	X	X	X	X
32	313535	PATTERN SELECTOR KNOB COMPRESSION RING	X	X	X	X
33	317074-451	PATTERN SELECTOR KNOB COVER		X	X	X
33A	314744-476	PATTERN SELECTOR KNOB TRIM PLATE <i>Disc</i>	X			
34A	317247-001	STITCH LENGTH CONTROL PANEL ASSEMBLY WITH GRAPHICS	X	X	X	
34A	317247-002	STITCH LENGTH CONTROL PANEL ASSEMBLY WITH GRAPHICS				X
35A	312657-457	REVERSE FEED CONTROL LEVER KNOB (PLASTIC)	X	X	X	X
36A	314676-464	BIGHT AMPLITUDE CONTROL LEVER KNOB (PLASTIC)	X	X	X	X
36B	312664-465	STITCH LENGTH CONTROL LEVER KNOB (PLASTIC)	X	X	X	X
37	313180	MACHINE HOLD DOWN MOUNTING KIT	X	X	X	X
38	148869	MACHINE LOCATOR PIN	X	X	X	X
39	314153	PATTERN SELECTOR KNOB SPACER	X	X		

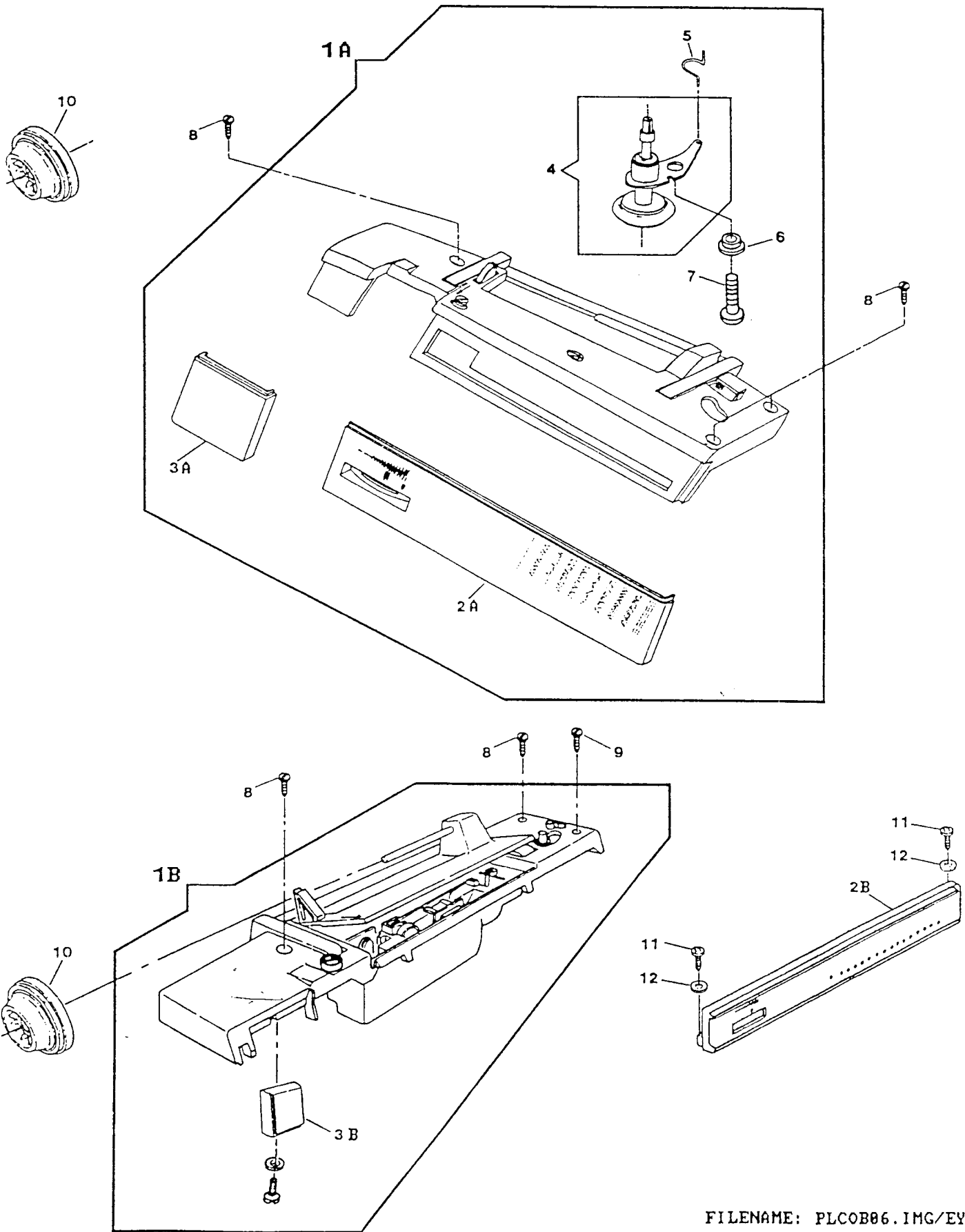
From the library of Diamond Needle Co.

ARM TOP COVER  
 MODEL: 9110 9113 9117 9124

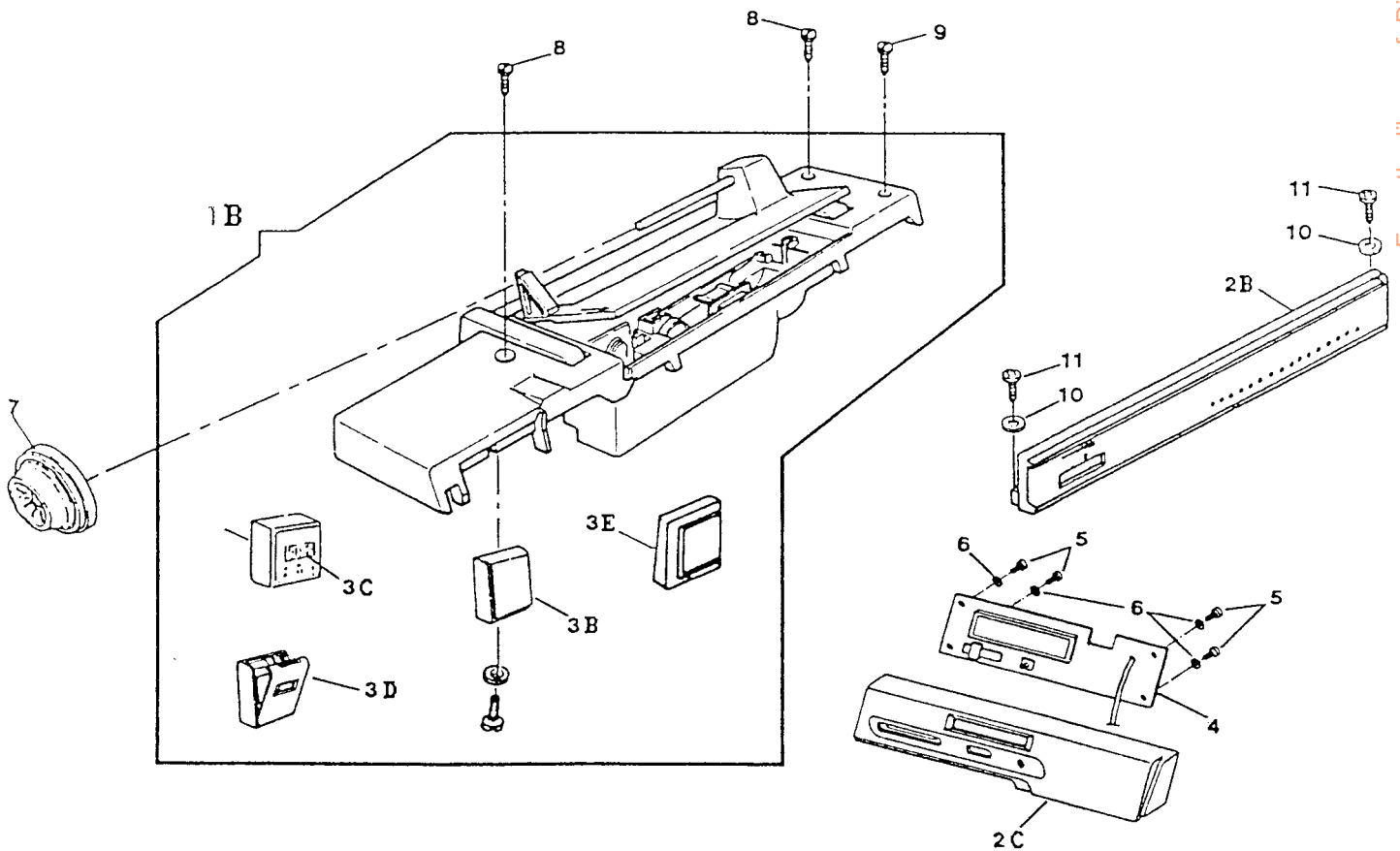
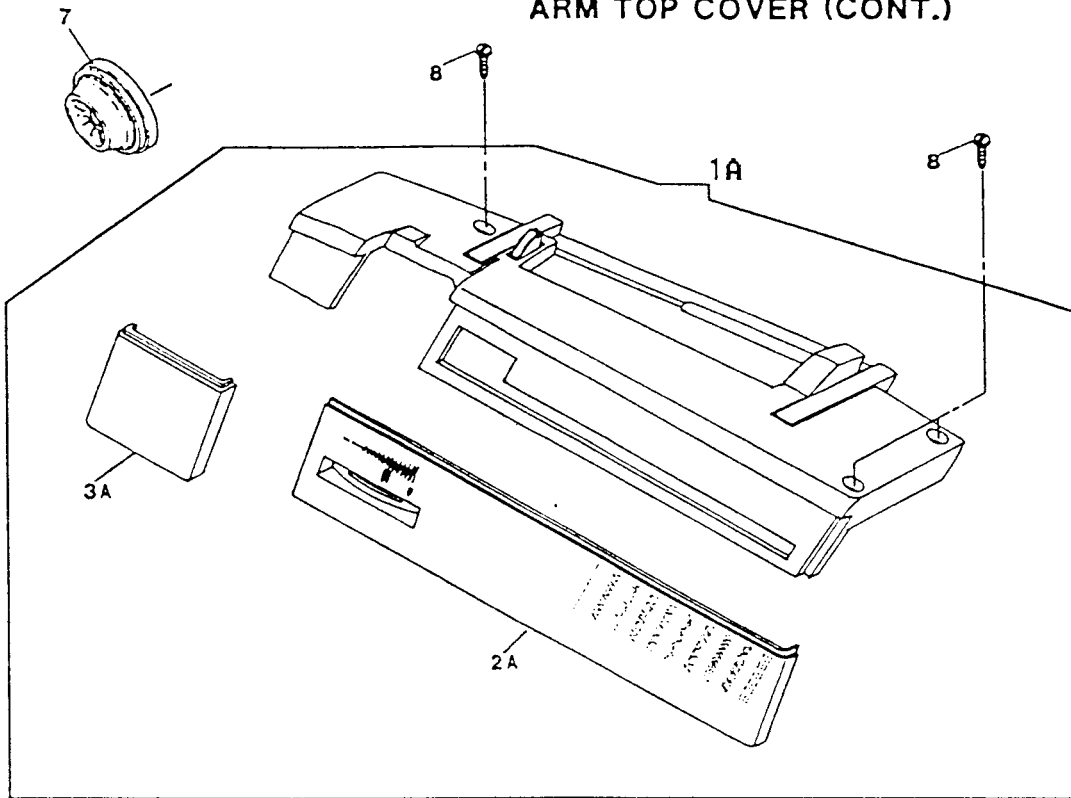
REF. PART NO.	PART NO.	DESCRIPTION	9	9	9	9
			1	1	1	1
			1	1	1	2
			0	3	7	4
1A	317122-029	ARM TOP COVER ASSEMBLY WITH HANDLE				X
2A	314640-916	CONTROL PANEL WITH GRAPHICS				X
3A	314703-917	CONTROL PANEL EXTENSION WITH GRAPHICS				X
4	314675	BOBBIN WINDER ASSEMBLY				X
5	312897	BOBBIN WINDER LEVER SPRING				X
6	312613	BOBBIN WINDER LEVER HINGE SCREW SHOULDER WASHER				X
7	<i>354927-004</i>	BOBBIN WINDER LEVER HINGE SCREW				X
8	354927-001	ARM TOP COVER MOUNTING SCREW				X
10	179967-456	SPOOL PIN THREAD LEAD-OFF				X



ARM TOP COVER



From the library of: Diamond Needle Corp



From the library of: Diamond Needle Corp

ARM TOP COVER (CONT.)  
 MODEL: 9110 9113 9117 9124

REF. PART NO.	NO.	DESCRIPTION	9	9	9	9
			1	1	1	1
			1	1	1	2
			0	3	7	4
1B	314378-029	ARM TOP COVER ASSEMBLY WITH HANDLE		X		
1B	314378-030	ARM TOP COVER ASSEMBLY WITH HANDLE			X	
1B	314378-033	ARM TOP COVER ASSEMBLY WITH HANDLE				X
2B	313128	CONTROL PANEL WITH GRAPHICS (FOR U.S.A.)		X		
2B	317245-001	CONTROL PANEL WITH GRAPHICS		X		
2B	317245-002	CONTROL PANEL WITH GRAPHICS			X	
2B	317245-003	CONTROL PANEL WITH GRAPHICS				X
3E	314390-025	CONTROL PANEL EXTENSION ASSEMBLY	X	X	X	
7	179967-456	SPOOL PIN THREAD LEAD-OFF	X	X	X	
8	<del>354927-001</del>	<del>ARM TOP COVER MOUNTING SCREW</del>	X	X	X	
9	354954-451	ARM TOP COVER MOUNTING SCREW (RIGHT FRONT)	X	X	X	
10	502495-451	CONTROL PANEL SCREW WASHER	X	X	X	
11	113455-001	CONTROL PANEL SCREW	X	X	X	

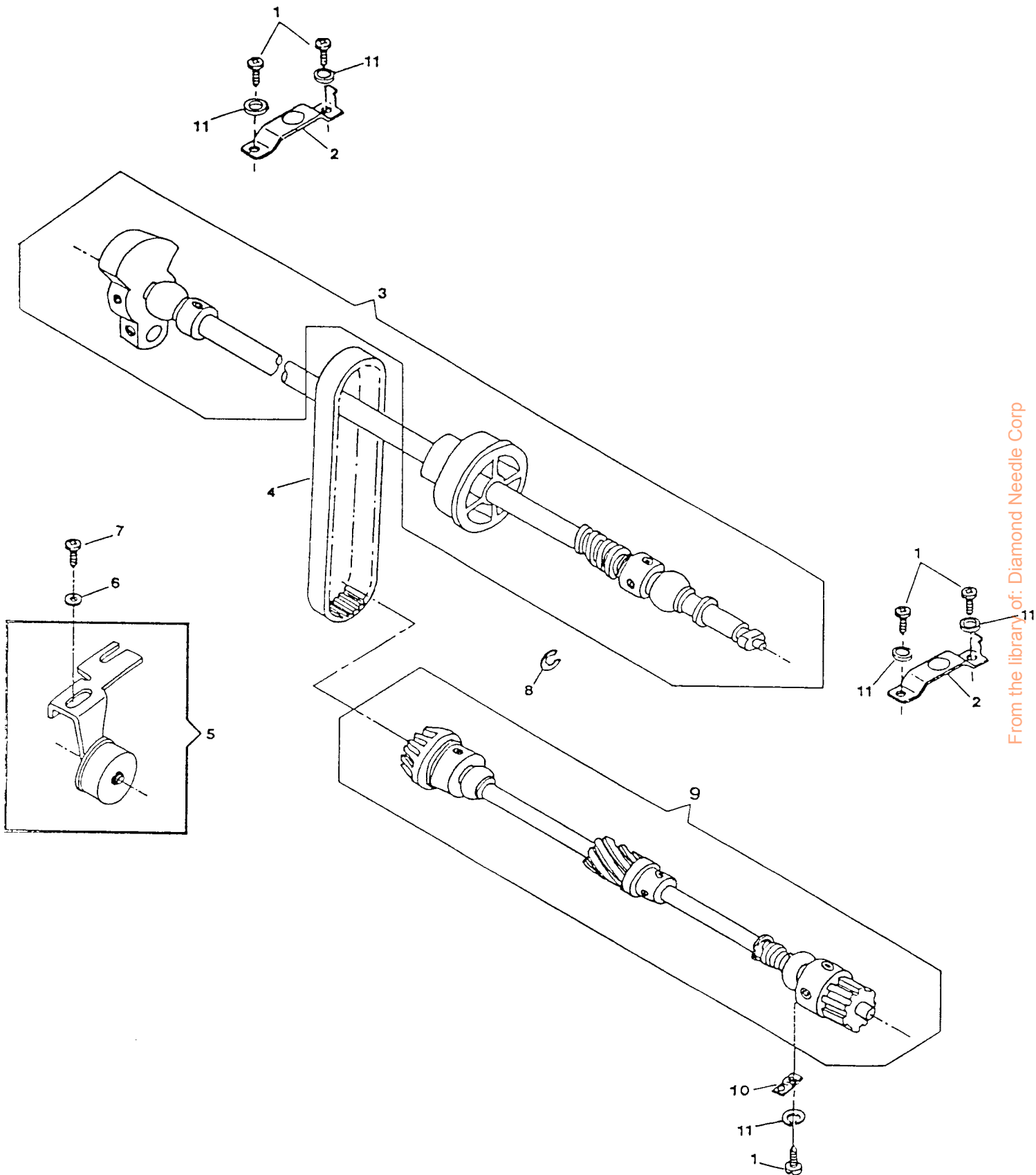
From the library of: Diamond Needle Corp

ARM SHAFT DRIVE SYSTEM  
 MODEL: 9110 9113 9117 9124

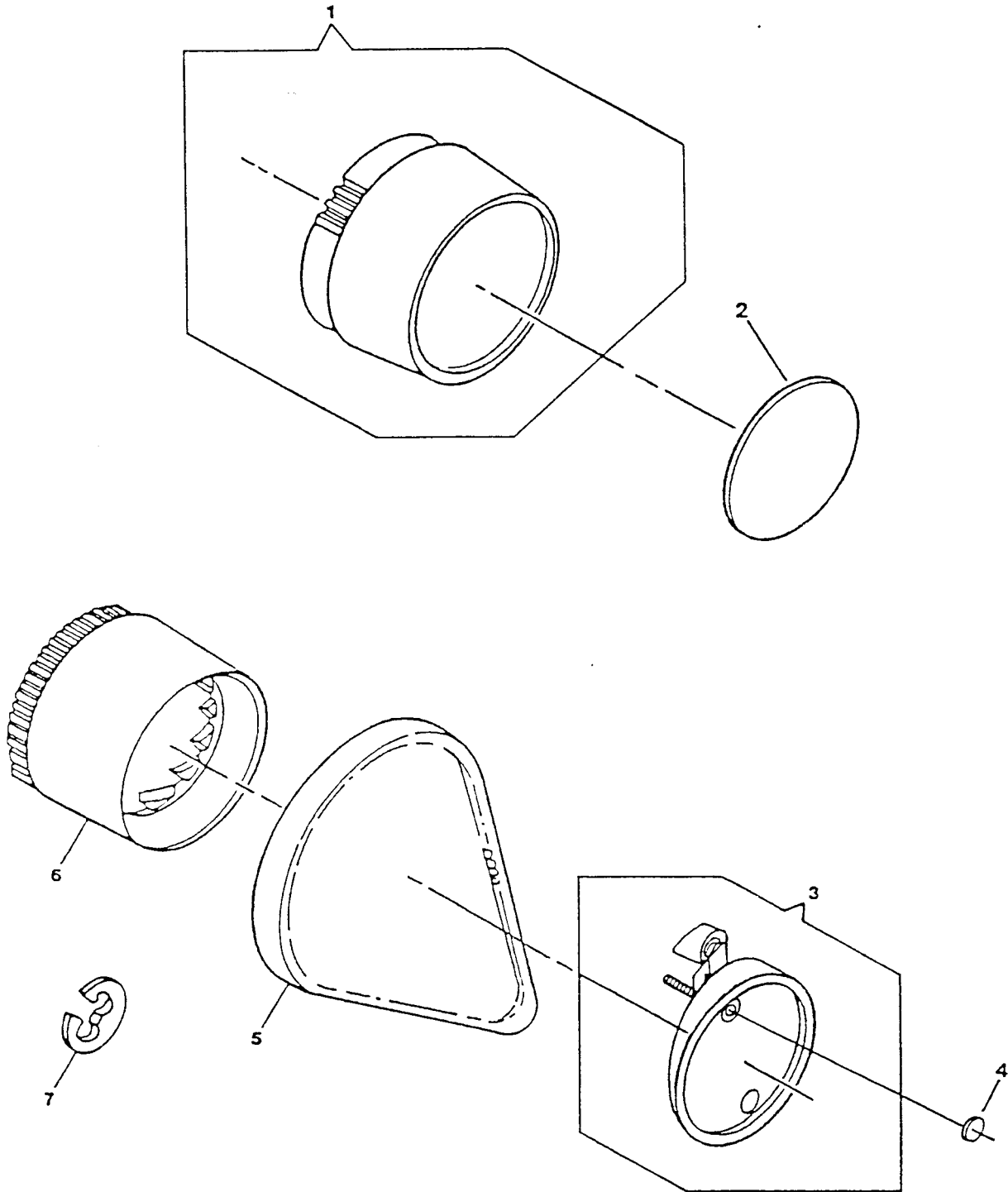
REF. PART NO.	PART NO.	DESCRIPTION	9	9	9	9
			1	1	1	1
			1	1	1	2
			0	3	7	4
1	113455-001	ARM SHAFT (HORIZONTAL) BUSHING (LEFT & RIGHT) CLAMP SCREW	X	X	X	X
2	312796	ARM SHAFT (HORIZONTAL) BUSHING (LEFT & RIGHT) CLAMP ASSEMBLY	X	X	X	X
3	286580-002	ARM SHAFT ASSEMBLY (CENTAUR)		X	X	X
3	313111-002	ARM SHAFT ASSEMBLY (APOLLO)	X			
4	603975-011	BELT (ROTATING HOOK DRIVE) ALT:603975-012	X	X	X	X
5	313195	IDLER BRACKET ASSEMBLY	X	X	X	X
6	314041-451	ROTATING HOOK DRIVING BELT TENSION ADJUSTER SCREW WASHER	X	X	X	X
7	113455-002	ROTATING HOOK DRIVING BELT TENSION ADJUSTER SCREW	X	X	X	X
8	313153	HAND WHEEL RETAINING RING	X			
9	314010	ROTATING HOOK DRIVE SHAFT SUB-ASSEMBLY	X	X	X	X
10	313816	ROTATING HOOK DRIVE SHAFT BUSHING (SELF-ALIGNING) CLAMP	X	X	X	X
11	314013-451	ROTATING HOOK DRIVE SHAFT BUSHING (SELF-ALIGNING) CLAMP SCREW AND ARM SHAFT BUSHING CLAMP SCREW LOCK WASHER	X	X	X	X

From the library of: Diamond Needle Corp.

ARM SHAFT DRIVE SYSTEM



From the library of: Diamond Needle Corp



HAND WHEEL  
 MODEL: 9110 9113 9117 9124

REF. PART NO.	NO.	DESCRIPTION	9	9	9	9
			1	1	1	1
			1	1	1	2
			0	3	7	4
1	312991-460	HAND WHEEL ASSEMBLY		X	X	X
2	314743-907	HAND WHEEL COVER (CENTAUR)		X	X	X
3	313185-453	HAND WHEEL CLUTCH PLATE ASSEMBLY		X		
4	314733-920	HAND WHEEL ACCESS PLATE (APOLLO)		X		
5	312628-001	BELT (MOTOR DRIVE) ALT:979285-001		X	X	X
6	312625-453	HAND WHEEL		X		
7	313153	HAND WHEEL RETAINING RING		X		

COAXIAL PRESSER BAR SYSTEM FOR NEW HEAD END  
 MODEL: 9110 9113 9117 9124

REF. PART NO.	PART NO.	DESCRIPTION	9	9	9	9
			1	1	1	1
			1	1	1	2
			0	3	7	4
1	314695-002	HEAD END MODULE (APOLLO)	X			
1	314700-004	HEAD END MODULE		X	X	X
2	314591	FACE PLATE MOUNTING BRACKET	X	X	X	X
3	313955-451	HEAD END MOUNTING PLATE LOCK WASHER	X	X	X	X
4	113455-012	HEAD END MOUNTING PLATE SCREW	X	X	X	X
5	163706-451	PRESSER FOOT SHANK (SNAP-ON)	X	X	X	X
6	313150	PRESSER FOOT PLATE (SNAP-ON) FOR ZIG-ZAG SEWING	X	X	X	X
7	113531-451	PRESSER FOOT THUMB SCREW	X			
8	314627-451	PRESSER FOOT THUMB SCREW & BOBBIN WINDER THREAD HOLDER		X	X	X
9	113455-001	NEEDLE THREAD TENSION RELEASE LEVER HINGE SCREW	X	X	X	X
10	314041-451	NEEDLE THREAD TENSION RELEASE LEVER RETAINING WASHER	X	X	X	X
11	314589	NEEDLE THREAD TENSION RELEASE LEVER ASSEMBLY	X	X	X	X
12	N2045	NEEDLE (SIZE NO.14)	X	X	X	X
13	113408-001	NEEDLE BAR DRIVING ARM BALL JOINT SCREW	X	X	X	X
14	931929-004	NEEDLE BAR DRIVING ARM BALL JOINT SCREW WASHER	X	X	X	X
15	314690	THREAD PINCH PLATE	X	X	X	X



4552, 7028, 9005, 5008, 9010

9110, 9113, 9117, 9124, 9143

2130, 33, 9137

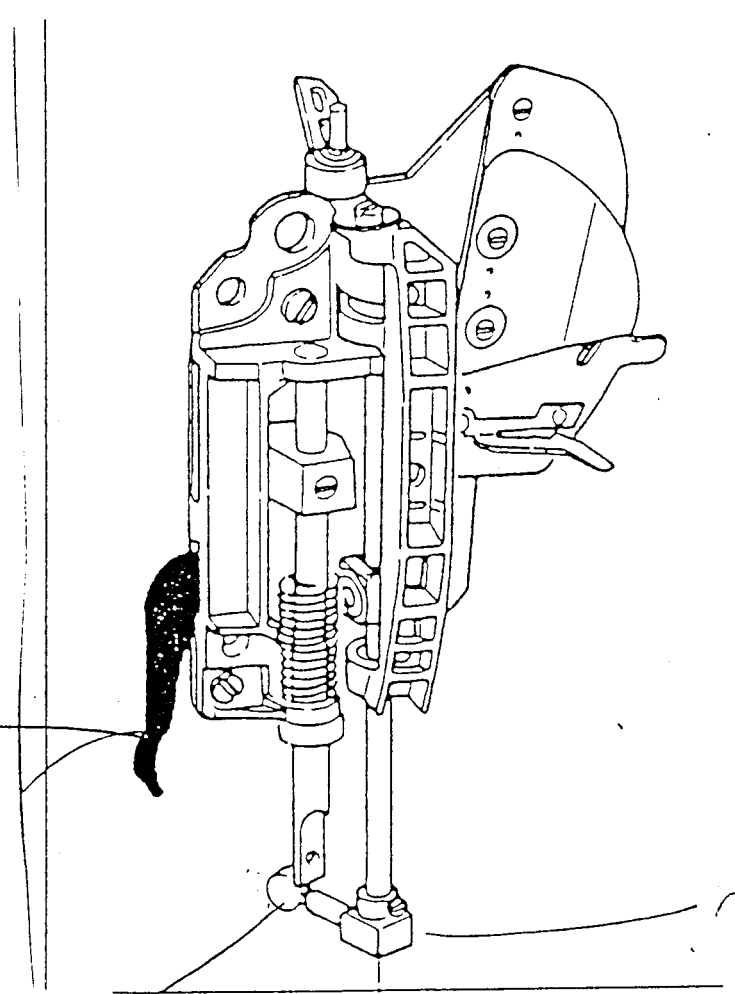
Head end  
module

314582  
Pressure  
Bar lifter

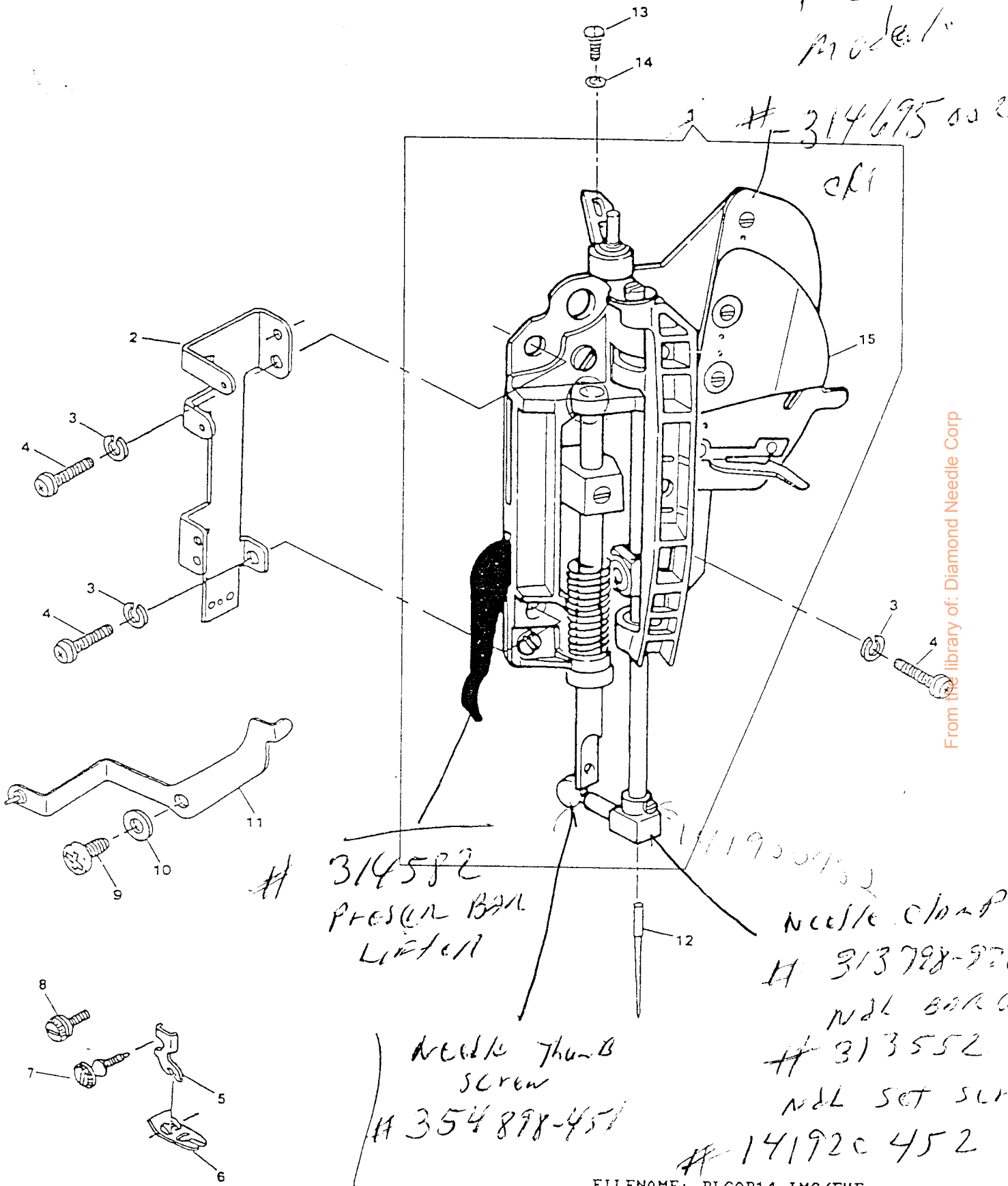
needle thumb screw  
354898-451

needle  
clamps body  
313798-970  
needle bar gib  
313552

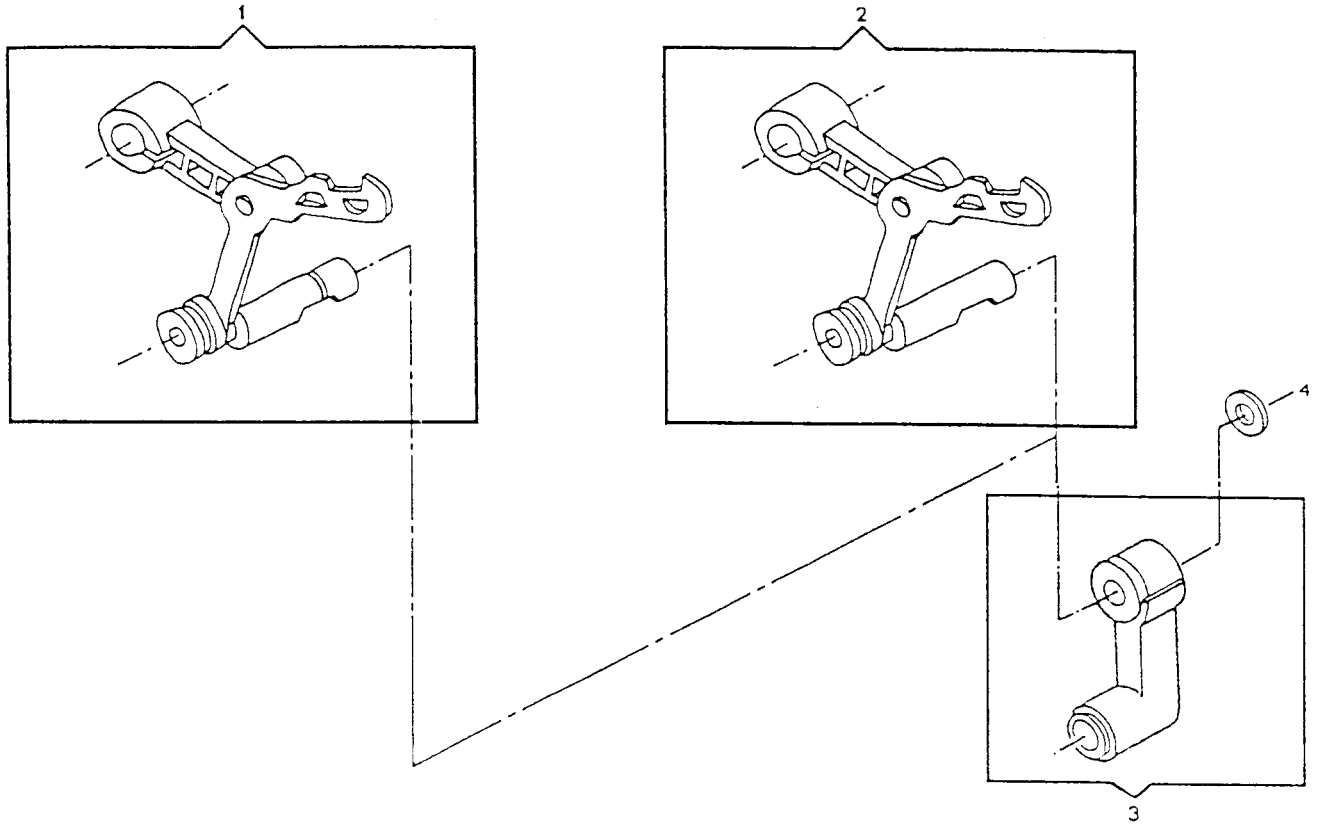
needle stop screw  
141920-452



HEAL END  
 Model 1



From the library of: Diamond Needle Corp



NEEDLE BAR & THREAD TAKE-UP FOR NEW HEAD END  
 MODEL: 9110 9113 9117 9124

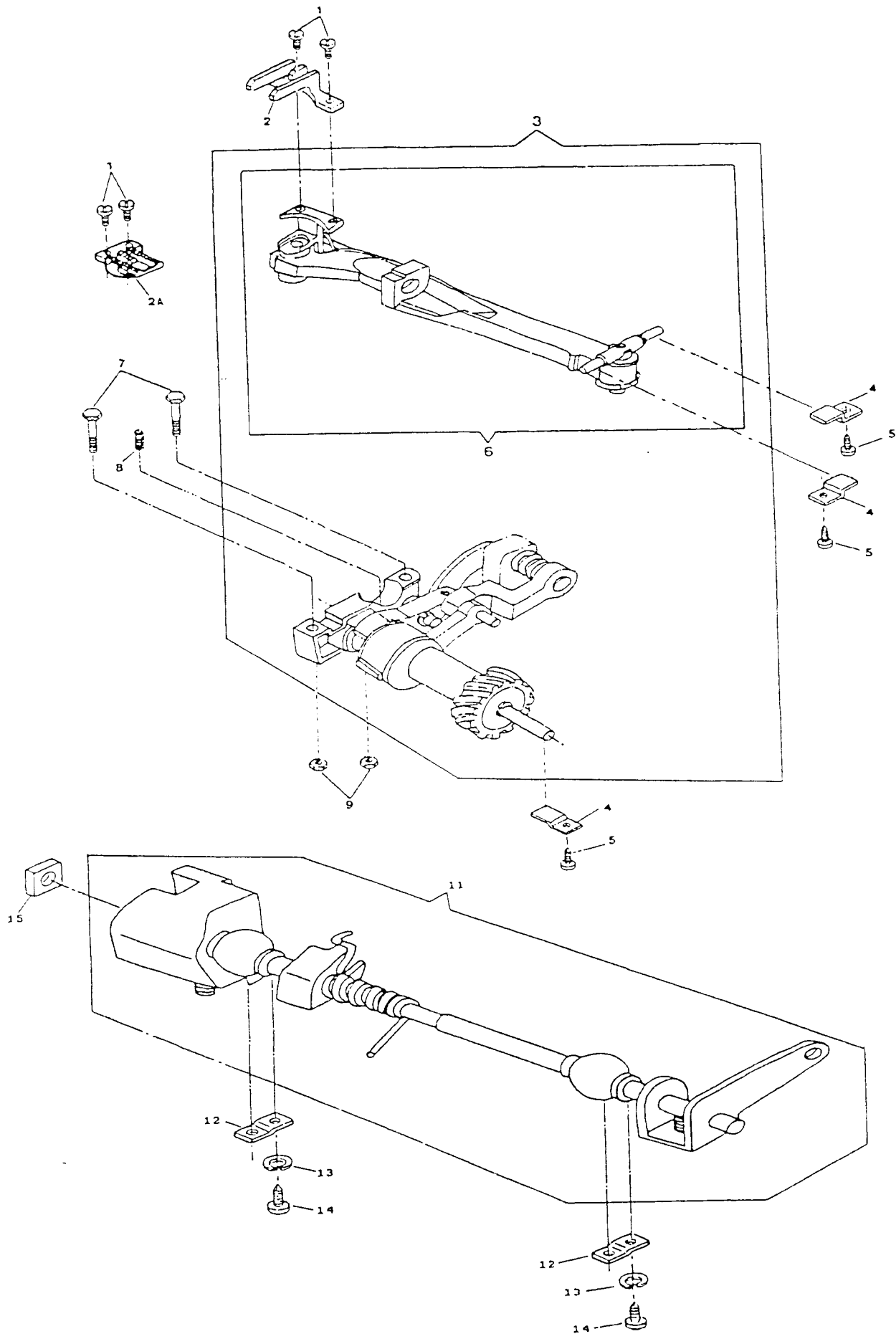
REF. PART NO.	PART NO.	DESCRIPTION	9	9	9	9
			1	1	1	1
			1	1	1	2
			0	3	7	4
1	314694	THREAD TAKE-UP COMPLETE (APOLLO)	X			
2	314699	THREAD TAKE-UP COMPLETE (CENTAUR)		X	X	X
3	137528-901	NEEDLE BAR CONNECTING LINK	X	X	X	X
4	314071	WASHER, THREAD TAKE-UP LEVER	X	X	X	X

From the library of: Diamond Needle Corp

ALPHA FEED  
 MODEL: 9110 9113 9117 9124

REF. PART NO.	PART NO.	DESCRIPTION	9	9	9	9
			1	1	1	1
			1	1	1	2
			0	3	7	4
1	141920-452	FEED DOG SCREW	X	X	X	X
2	313021	FEED DOG (ZINC) (CENTAUR)		X	X	X
2A	312679	FEED DOG (APOLLO) ALT:313171	X			
3	314140-001	ALPHA FEED MODULE		X	X	X
3	314140-002	ALPHA FEED MODULE ALT:313011	X			
4	312851	FEED BAR PIVOT HINGE STUD CLAMP	X	X	X	X
5	113455-003	CLAMP SCREW	X	X	X	X
6	314141	FEED BAR ASSEMBLY	X	X	X	X
7	354921-451	FEED & ROTATING HOOK DRIVE SHAFT BEARING BLOCK SCREW	X	X	X	X
8	314070	ROTATING HOOK DRIVE SHAFT BUSHING SPRING	X	X	X	X
9	514674-451	FEED & ROTATING HOOK DRIVE SHAFT BEARING BLOCK MOUNTING SCREW NUT	X	X	X	X
11	313133	FEED REGULATOR SHAFT ASSEMBLY	X	X	X	X
12	313816	FEED REGULATOR SHAFT BUSHING (SELF-ALIGNING) CLAMP	X	X	X	X
13	314013-451	FEED REGULATOR SHAFT BUSHING (SELF-ALIGNING) CLAMP SCREW LOCK WASHER	X	X	X	X
14	113455-001	FEED REGULATOR SHAFT BUSHING (SELF-ALIGNING) CLAMP SCREW	X	X	X	X
15	511030	FEED REGULATOR SLIDE BLOCK	X	X	X	X

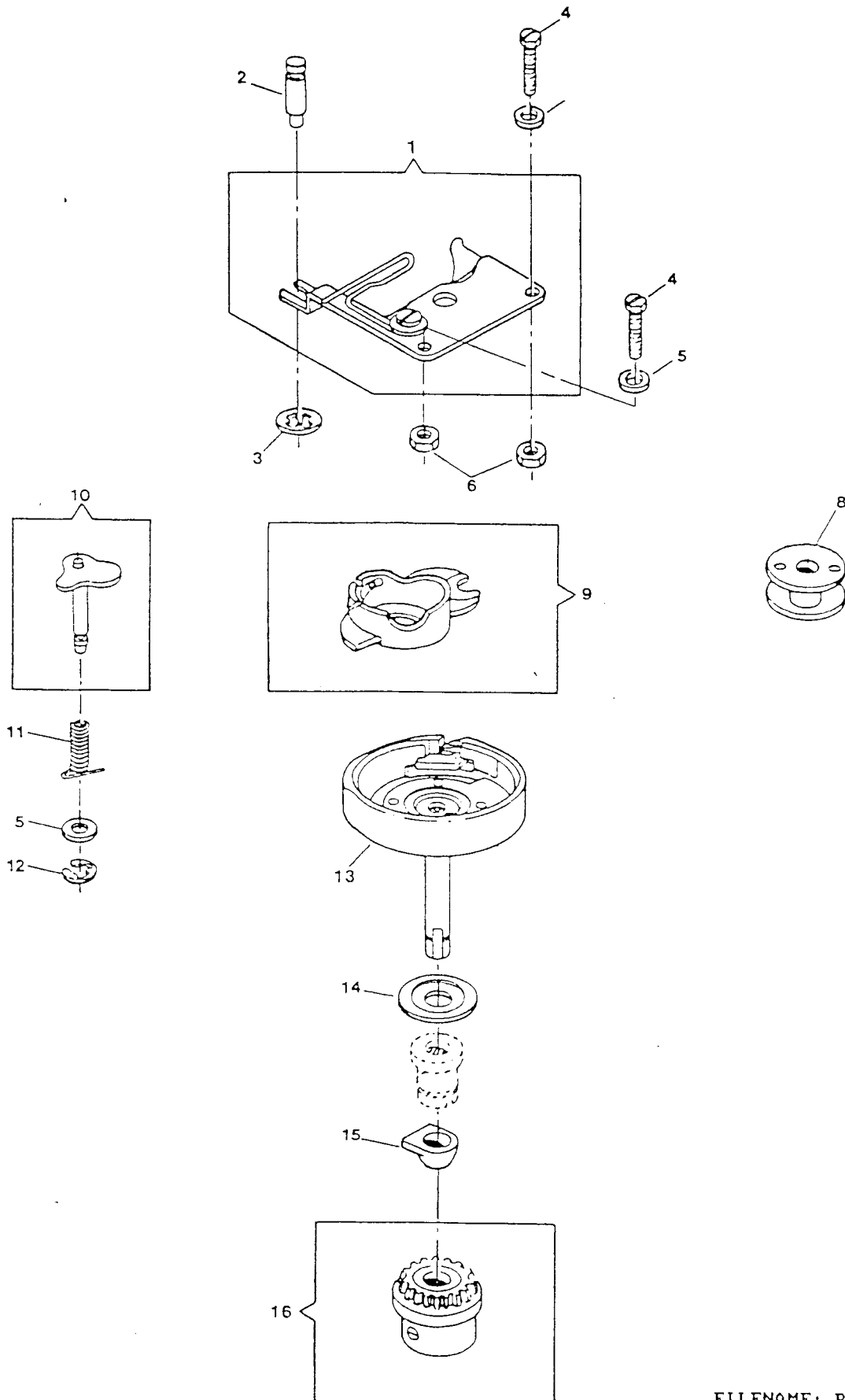
From the library of: Diamond Needle Corp



From the library of: Diamond Needle Corp

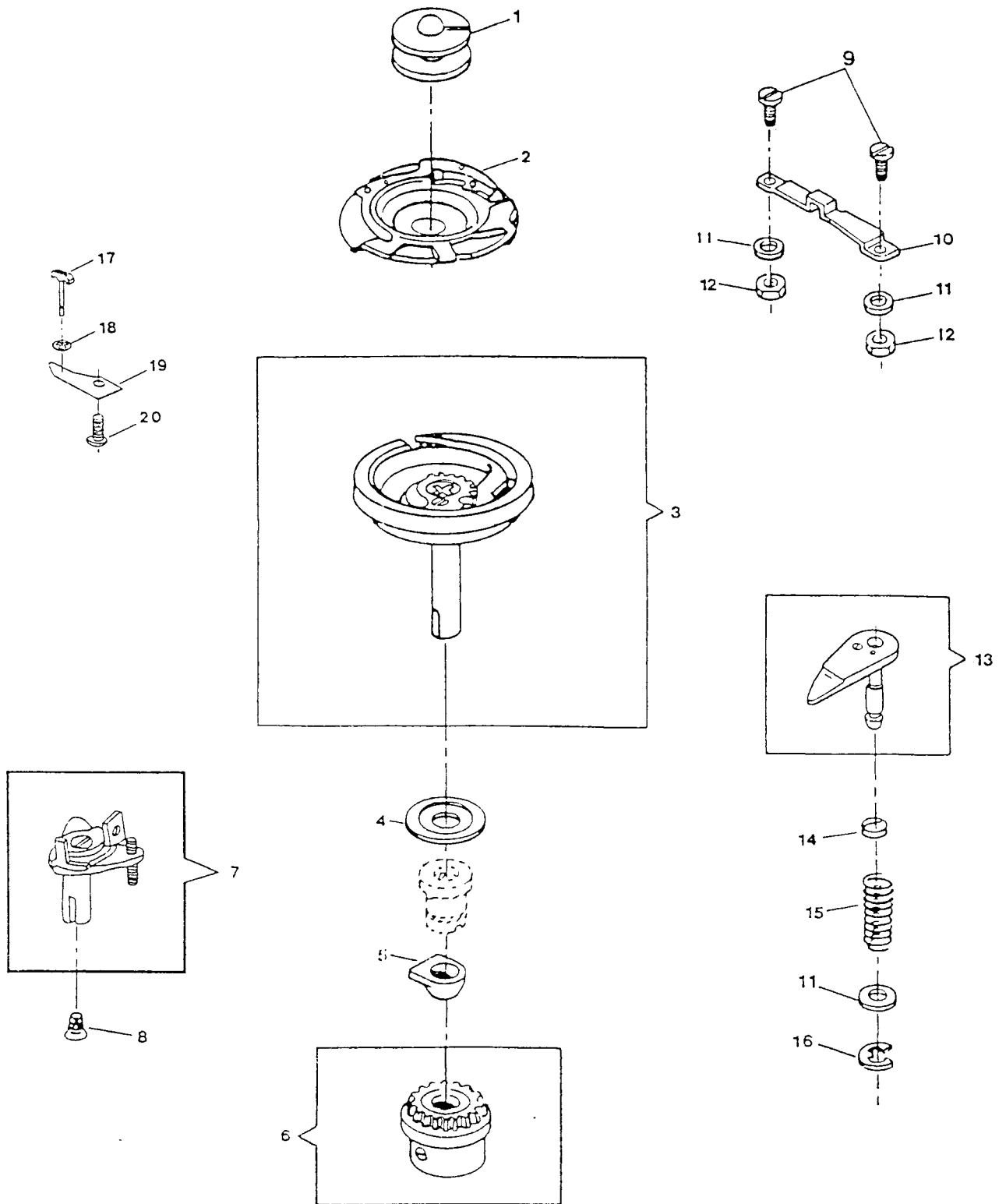
HOOK SYSTEM (APOLLO)  
 MODEL: 9110 9113 9117 9124

REF. NO.	PART NO.	DESCRIPTION	9	9	9	9
			1	1	1	1
			1	1	1	2
			0	3	7	4
1	313089	ROTATING HOOK BOBBIN CASE POSITION PLATE ASSEMBLY				X
1	314066	ROTATING HOOK BOBBIN CASE POSITION PLATE ASSEMBLY (ALT:313089)				X
2	312603	ROTATING HOOK BOBBIN CASE POSITION PLATE HOLD DOWN STUD				X
3	313161	ROTATING HOOK BOBBIN CASE POSITION PLATE HOLD DOWN STUD RETAINER				X
4	113439-451	ROTATING HOOK BOBBIN CASE POSITION PLATE SCREW				X
5	313190-451	ROTATING HOOK BOBBIN CASE POSITION PLATE SCREW WASHER				X
6	313945-451	ROTATING HOOK BOBBIN CASE POSITION PLATE SCREW NUT				X
7	446138	ROTATING HOOK BOBBIN CASE POSITION PLATE SCREW WASHER (RIGHT)				X
8	172336-001	ROTATING HOOK BOBBIN (PLASTIC)				X
9	421325	ROTATING HOOK BOBBIN CASE COMPLETE				X
10	312846	ROTATING HOOK BOBBIN CASE RETAINING PLATE SUB-ASSEMBLY				X
11	312607	ROTATING HOOK BOBBIN CASE RETAINING PLATE STUD SPRING				X
12	313783	ROTATING HOOK BOBBIN CASE RETAINING PLATE STUD RETAINING RING				X
13	447926-932	ROTATING HOOK COMPLETE				X
14	314049-001	ROTATING HOOK FLANGED BUSHING THRUST WASHER				X
15	312847	ROTATING HOOK FLANGED BUSHING WASHER				X
16	314012	ROTATING HOOK BEVEL GEAR COMPLETE				X
16	314101-900	ROTATING HOOK BEVEL GEAR COMPLETE (ALT:314012)				X



From the library of: Diamond Needle Corp





From the library of: Diamond Needle Corp

## HOOK AND BOBBIN WINDING SYSTEM (CENTAUR)

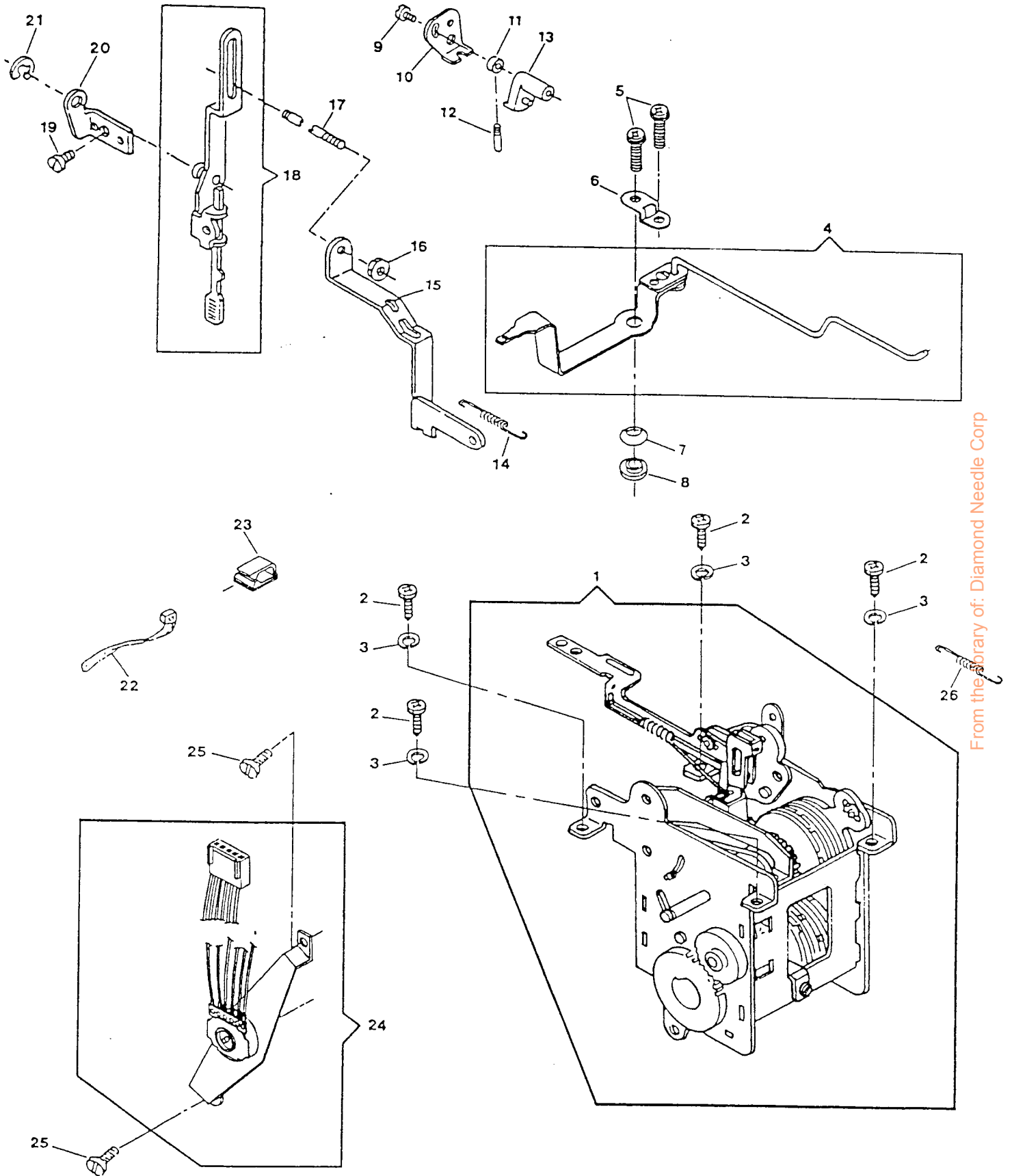
MODEL:9110 9113 9117 9124

REF. PART NO.	PART NO.	DESCRIPTION	9	9	9	9
			1	1	1	1
			1	1	1	2
			0	3	7	4
1	312956-001	BOBBIN				
2	314662-001	ROTATING HOOK BOBBIN CASE COMPLETE (USED WITH 314025)	X	X	X	
3	313183-002	ROTATING HOOK ASSEMBLY	X	X	X	
4	314049-001	ROTATING HOOK FLANGED BUSHING THRUST WASHER	X	X	X	
5	312847	ROTATING HOOK FLANGED BUSHING WASHER	X	X	X	
6	314012	ROTATING HOOK BEVEL GEAR COMPLETE	X	X	X	
7	313956	BED SLIDE ACTUATING LEVER ASSEMBLY	X	X	X	
8	354929-451	BED SLIDE ACTUATING LEVER STUD SCREW	X	X	X	
9	113439-451	ROTATING HOOK BOBBIN CASE POSITION PLATE SCREW	X	X	X	
10	312738	ROTATING HOOK BOBBIN CASE POSITION PLATE	X	X	X	
11	313190-451	ROTATING HOOK BOBBIN CASE POSITION PLATE SCREW WASHER	X	X	X	
12	313945-451	ROTATING HOOK BOBBIN CASE POSITION PLATE SCREW NUT	X	X	X	
13	313088	ROTATING HOOK BOBBIN CASE RETAINING PLATE COMPLETE	X	X	X	
14	313930	ROTATING HOOK BOBBIN CASE RETAINING PLATE RETURN SPRING	X	X	X	
15	314072	ROTATING HOOK BOBBIN CASE RETAINING PLATE SPRING	X	X	X	
16	312702	ROTATING HOOK BOBBIN CASE RETAINING PLATE SPRING RETAINING RING	X	X	X	
17	314766	BED SLIDE STOP PIN	X	X	X	
18	314768	STOP PIN RETAINING RING	X	X	X	
19	314767	BED SLIDE STOP PIN SPRING	X	X	X	
20	113455-006	SCREW	X	X	X	

PATTERN, STITCH LENGTH CONTROL & CAM CONTROLLED FEED (CONT.)  
 MODEL:9110,9113,9117,9124

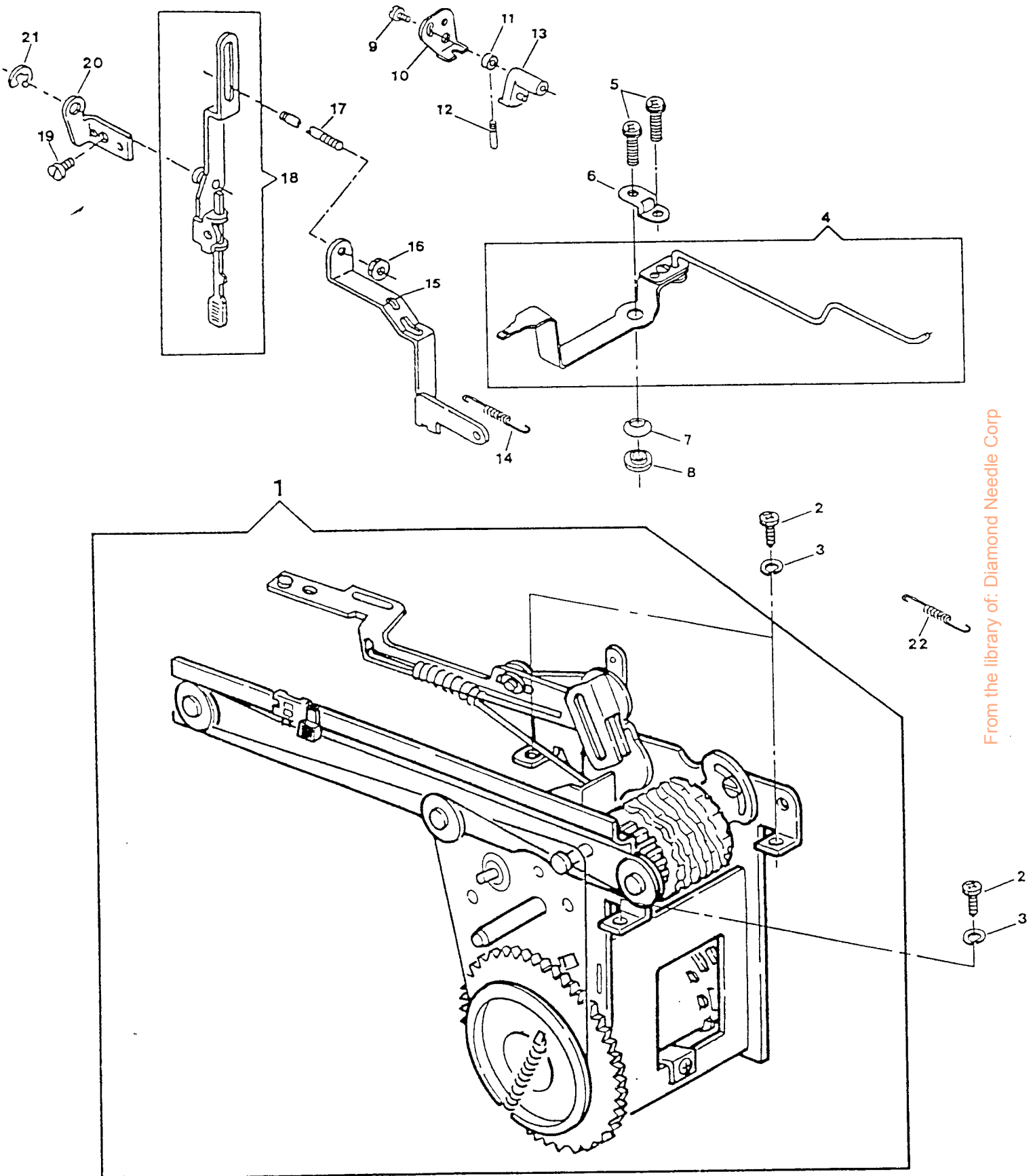
REF. PART NO.	PART NO.	DESCRIPTION	9	9	9	9
			1	1	1	1
			1	1	1	2
			0	3	7	4
1	314601-001	PATTERN SELECTOR MODULE				X
2	113455-001	DISC SELECTOR MECHANISM MOUNTING PLATE SCREW (LEFT AND RIGHT)				X
3	314013-451	DISC SELECTOR MECHANISM MOUNTING PLATE SCREW (LEFT AND RIGHT) LOCK				X
4	314607	BIGHT AMPLITUDE CONTROL LEVER ASSEMBLY				X
5	113455-014	BIGHT AMPLITUDE CONTROL LEVER STOP ADJUSTMENT SCREW				X
6	314683	BIGHT AMPLITUDE CONTROL LEVER RETAINER				X
7	353457	BIGHT AMPLITUDE CONTROL LEVER FRICTION WASHER				X
8	314611	BIGHT AMPLITUDE CONTROL LEVER SHOULDER WASHER				X

# PATTERN STITCH LENGTH CONTROL AND CAM CONTROLLED FEED



From the library of: Diamond Needle Corp

PATTERN STITCH LENGTH CONTROL AND CAM CONTROLLED FEED (CONT.)



From the library of: Diamond Needle Corp

PATTERN, STITCH LENGTH CONTROL & CAM CONTROLLED FEED (CONT.)  
 MODEL:9110 9113 9117 9124

REF. PART NO.	PART NO.	DESCRIPTION	9	9	9	9
			1	1	1	1
			1	1	1	2
			0	3	7	4
1	314601-004	PATTERN SELECTOR MODULE				
1	314613-001	PATTERN SELECTOR MODULE				
1	317268-001	PATTERN SELECTOR MODULE				
2	113455-001	DISC SELECTOR MECHANISM MOUNTING PLATE SCREW (LEFT AND RIGHT)				
3	314013-451	DISC SELECTOR MECHANISH MOUNTING PLATE SCREW (LEFT AND RIGHT) LOCK WASHER				
4	314607	BIGHT AMPLITUDE CONTROL LEVER ASSEMBLY				
5	113455-014	BIGHT AMPLITUDE CONTROL LEVER STOP ADJUSTMENT SCREW				
6	314683	BIGHT AMPLITUDE CONTROL LEVER RETAINER				
7	353457	BIGHT AMPLITUDE CONTROL LEVER FRICTION WASHER				
8	314611	BIGHT AMPLITUDE CONTROL SHOULDER WASHER				
9	544211-010	BUTTONHOLE ACTUATOR CAM ADJUSTING BRACKET SCREW				
10	313073	BUTTONHOLE ACTUATOR CAM ADJUSTING BRACKET				
11	313022	BUTTONHOLE FOLLOWER HUB RELEASE				
12	313023	BUTTONHOLE FOLLOWER HUB RELEASE PIN				
13	313025	BUTTONHOLE ACTUATOR CAM				
14	313799	BUTTONHOLE ACTUATOR ADJUSTING ROD SPRING				
15	313005	BUTTONHOLE DISC CONTROL CATCH RELEASE LINK				
16	314763-451	BUTTONHOLE TRIPPING ROD ADJUSTING AND LOCKING NUT				
17	312982	BUTTONHOLE TRIPPING LEVER ROD				
18	312994-002	BUTTONHOLE KICK-OUT TRIPPING ROD LEVER ASSEMBLY				
19	354877-451	BUTTONHOLE PIVOT LEVER SCREW				
20	313392	BUTTONHOLE LEVER PIVOT				
21	312685	BUTTONHOLE KICK-OUT SHAFT TRIPPING LEVER RETAINING RING				

From the library of: Diamond Needle Corp

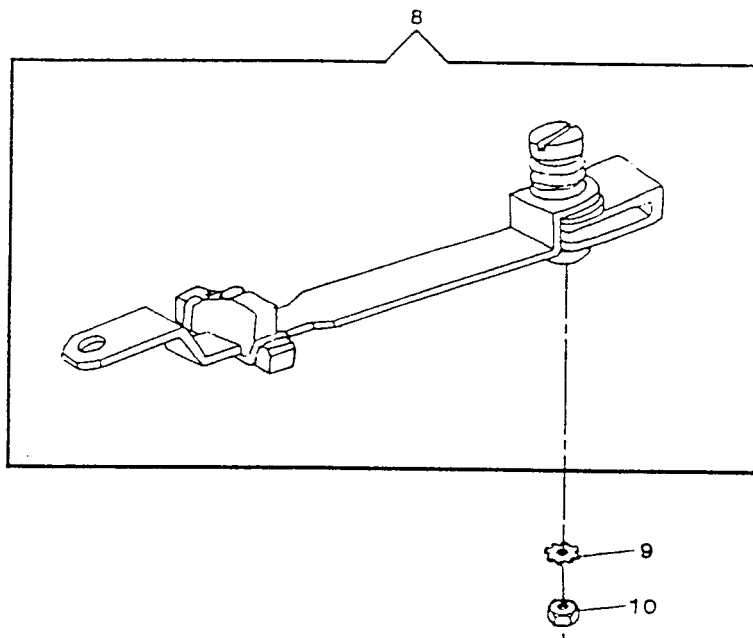
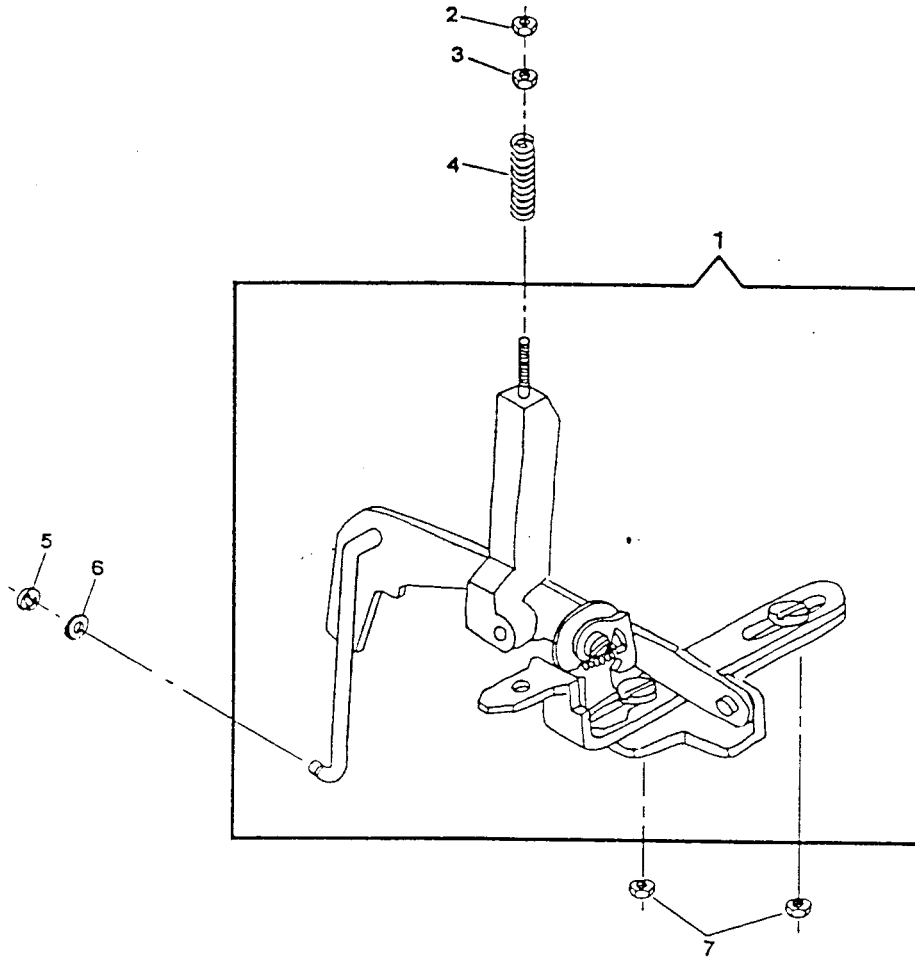


PATTERN, STITCH LENGTH CONTROL & CAM CONTROLLED FEED (CONT.)  
 MODEL: 9110 9113 9117 9124

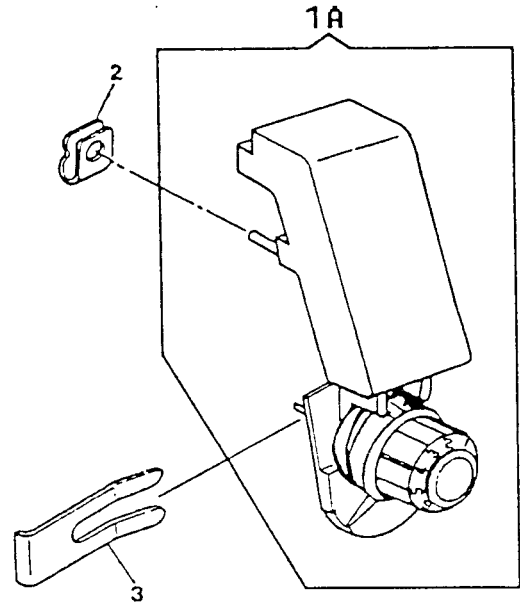
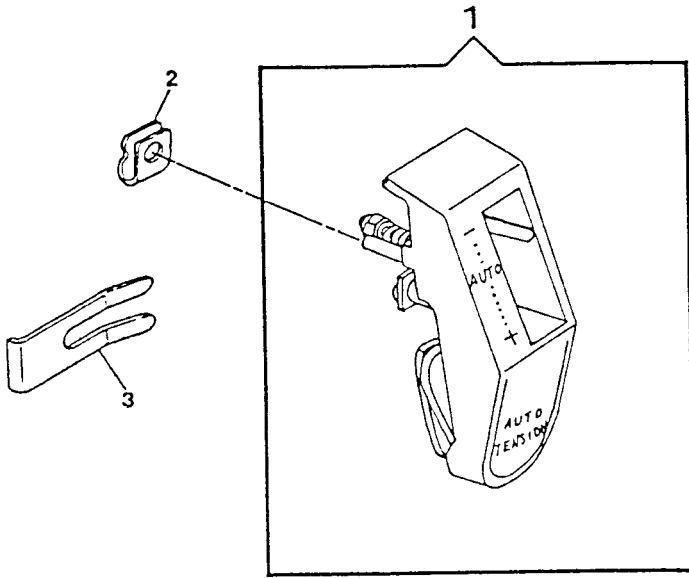
REF. NO.	PART NO.	DESCRIPTION	9	9	9	9
			9	9	9	9
			1	1	1	1
			1	1	1	2
			0	3	7	4
1	314300-001	FEED REVERSE MECHANISM	X	X		
1	314300-002	FEED REVERSE MECHANISM			X	X
2	514674-451	CAM CONTROLLED FEED CONNECTING ROD LOCKING NUT	X	X	X	X
3	312645-451	CAM CONTROLLED FEED DISC FOLLOWER ACTUATOR CONNECTING ROD ADJUSTING	X	X	X	X
4	313143	CAM CONTROLLED FEED DISC FOLLOWER ACTUATOR CONNECTING ROD SPRING	X	X	X	X
5	312702	FEED LEVER CONNECTING LINK RETAINING RING	X	X	X	X
6	313891	CAM CONTROLLED FEED CONNECTING ROD STABILIZING WASHER	X	X	X	X
7	514674-451	REVERSE FEED CONTROL LEVER GUIDE SCREW NUT	X	X	X	X
8	313569	STITCH LENGTH CONTROL LEVER ASSEMBLY	X	X	X	X
9	313172-451	STITCH LENGTH CONTROL LEVER PIVOT LOCK WASHER	X	X	X	X
10	313177-451	STITCH LENGTH CONTROL LEVER NUT	X	X	X	X

From the library of: Diamond Needle Corp

PATTERN STITCH LENGTH CONTROL AND CAM CONTROLLED FEED (CONT.)







DEMAND RESPONSIVE NEEDLE TENSION SYSTEM  
MODEL: 9110 9113 9117 9124

REF. PART			9 9 9 9
NO.	NO.	DESCRIPTION	1 1 1 1
			1 1 1 2
			0 3 7 4
1	317011-007	THREAD TENSION MODULE	X X X X
2	313199	TENSION COVER MOUNTING RETAINER	X X X X
3	313047	TENSION COVER RETAINING CLIP	X X X X

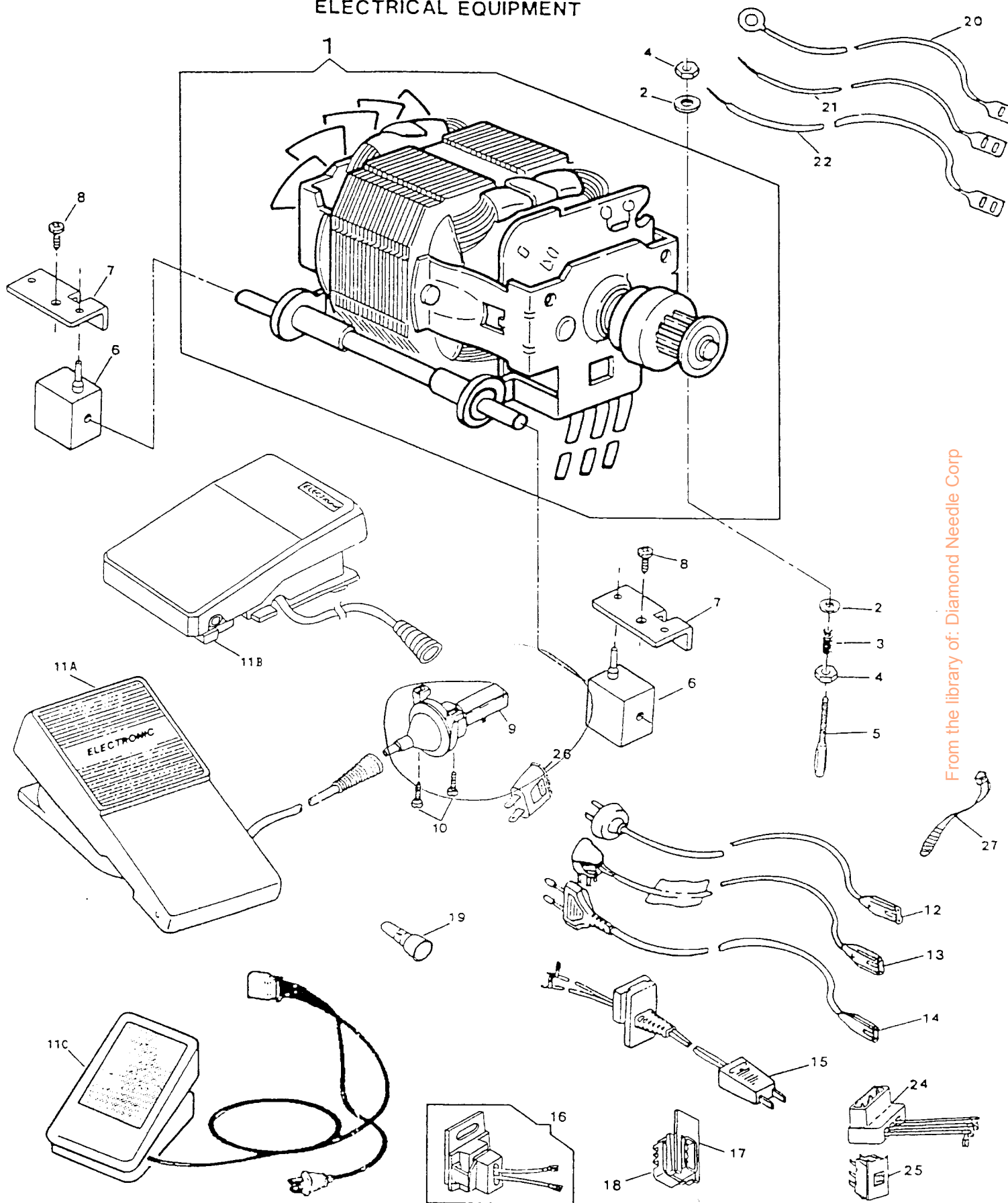
From the library of: Diamond Needle Corp

ELECTRICAL EQUIPMENT  
MODEL: 9110 9113 9117 9124

REF. PART NO.	NO.	DESCRIPTION	9	9	9	9
			1	1	1	1
			1	1	1	2
			0	3	7	4
	<i>31737506</i>					
1	<del>317279-001</del>	MOTOR COMPLETE (DUAL VOLTAGE FOR U.S.A. /KOREA /GERMANY & H.K.)	X	X	X	X
1	988529-009	MOTOR COMPLETE (CAT. NO. TA4-8) (120V) (NATIONAL MOTOR)	X	X	X	X
1	988529-010	MOTOR COMPLETE (CAT. NO. TA4-11) 220/240VOLT	X	X	X	X
2	37969	MOTOR ADJUSTING STUD NUT WASHER	X	X	X	X
3	314058	MOTOR BELT TENSION SPRING	X	X	X	X
4	53646	MOTOR ADJUSTING STUD NUT	X	X	X	X
5	988653-001	MOTOR ADJUSTING STUD	X	X	X	X
6	979329-001	RESILIENT MOUNT	X	X	X	X
7	988651-001	CLIP	X	X	X	X
8	113470-004	MOTOR MOUNTING SCREW	X	X	X	X
9	988549-005	PNEUMATIC TRANSDUCER	X	X	X	X
10	113444-003	PNEUMATIC TRANSDUCER MOUNTING SCREW	X	X	X	X
11A	979583-001	PNEUMATIC CONTROLLER ASSEMBLY <i>Car Controller</i>	X	X	X	X
11C	<del>137904</del>	FOOT CONTROLLER W/PLUG ASS'Y (240V) (U.K.)	X	X	X	X
11C	317281-001	CARBON PILE FOOT CONTROLLER ASSEMBLY (230V) (EUROPE) (FOR 9008N304) (DUAL VOLTAGE FOR U.S.A. /KOREA /GERMANY & H.K.)	X	X	X	X
11C	319003-005	TRIAC FOOT CONTROLLER (DUAL VOLTAGE) (FOR U.S.A. ONLY)	X	X	X	X
12	988638-004	APPLIANCE COUPLER (240VOLT) FOR AUSTRALIA	X	X	X	X
13	137902	POWER PLUG WITH CORD ASS'Y (240V FOR U.K.)	X	X	X	X
15	988557-001	CORD COMPLETE (120V)	X	X	X	X
16	988657-003	CORD WITH RECEPTACLE (FOR EUROPE/U.K./AUSTRALIA)	X	X	X	X
17	317282-901	HOLDER (220V/240V) (FOR 9008N304) (DUAL VOLTAGE FOR U.S.A. /KOREA /GERMANY & H.K.)	X	X	X	X
24	317283-001	RECEPTACLE W/LEAD ASS'Y (DUAL VOLTAGE FOR U.S.A. /KOREA /GERMANY & H.K.)	X	X	X	X
25	317284-901	VOLTAGE SELECTOR SWITCH (DUAL VOLTAGE FOR U.S.A. /KOREA /GERMANY & H.K.)	X	X	X	X
26	137547	ADAPTOR (DUAL VOLTAGE FOR U.S.A. /KOREA /GERMANY & H.K.)	X	X	X	X
27	540899	TY-WRAP SELF LOCKING (DUAL VOLTAGE FOR U.S.A. /KOREA /GERMANY & H.K.)	X	X	X	X

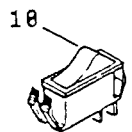
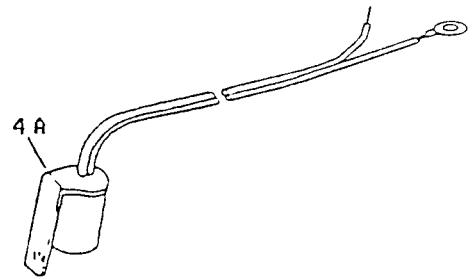
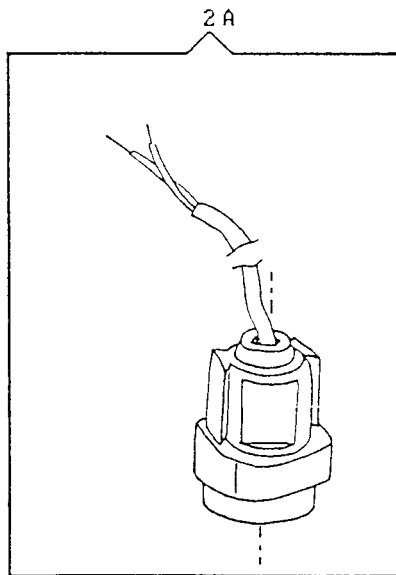
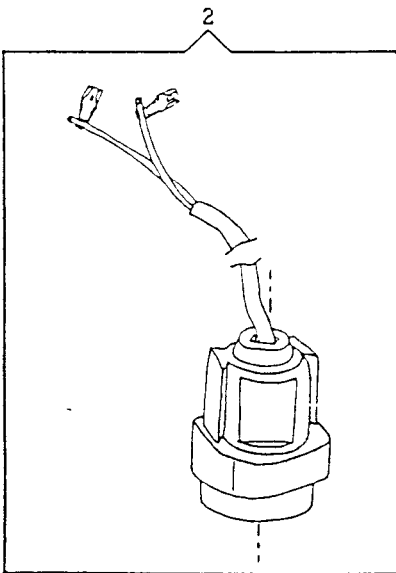
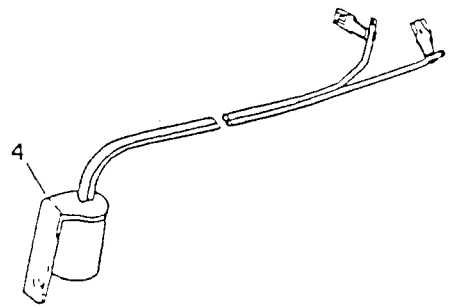
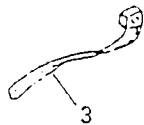
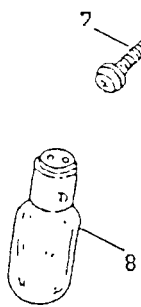
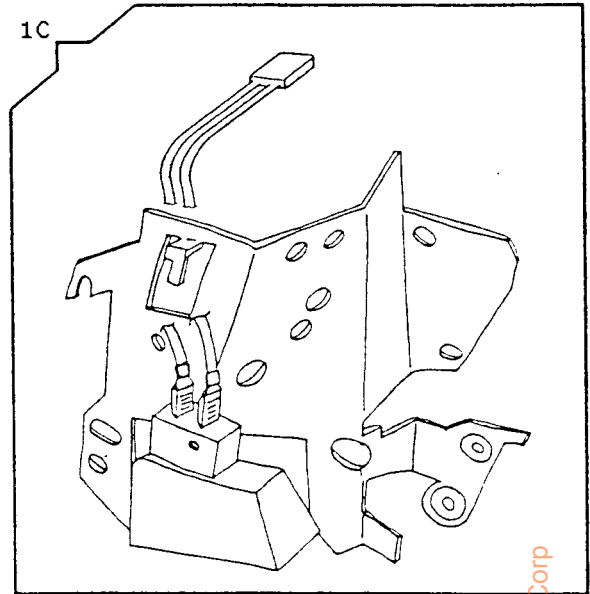
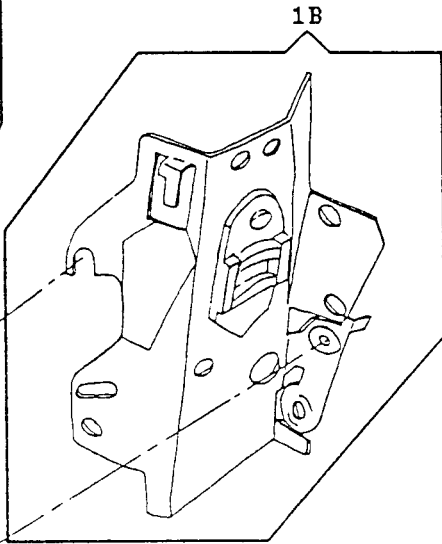
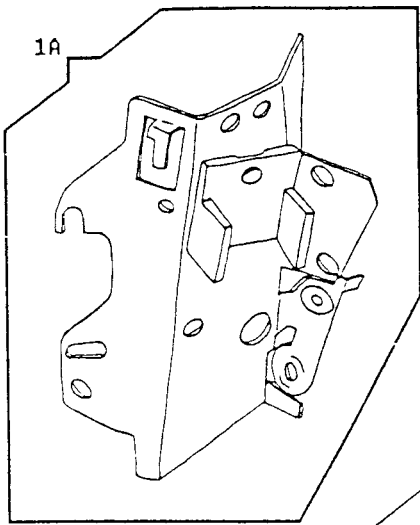
From the library of: Diamond Needle Corp

*817 776 8206*



From the library of: Diamond Needle Corp

H-e N-J-E-M-A-U



From the library of: Diamond Needle Corp

ELECTRICAL EQUIPMENT(CONT.)  
 MODEL: 9110 9113 9117 9124

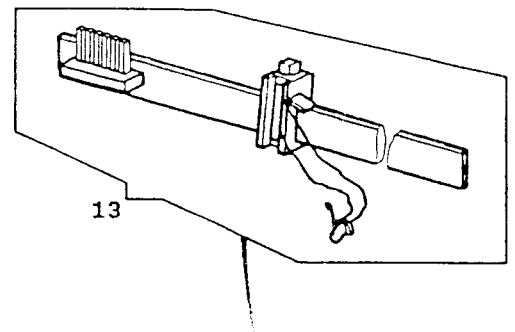
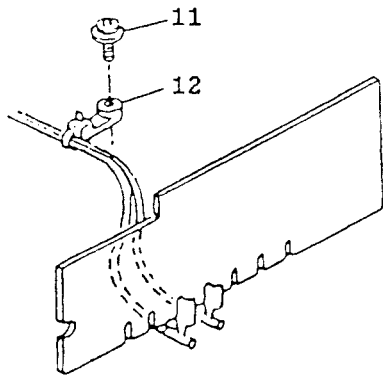
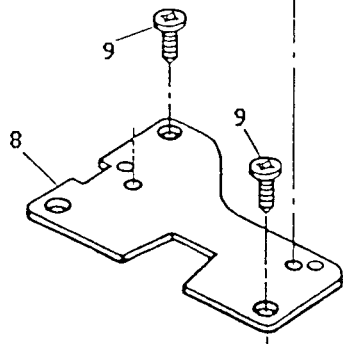
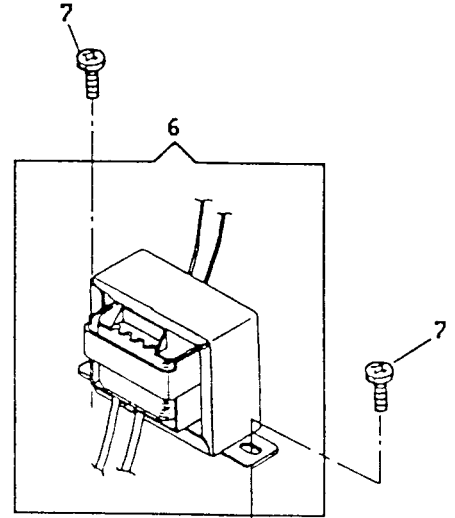
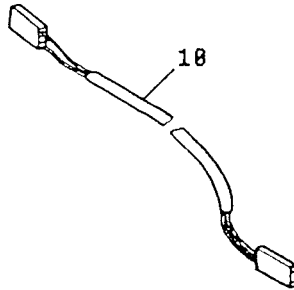
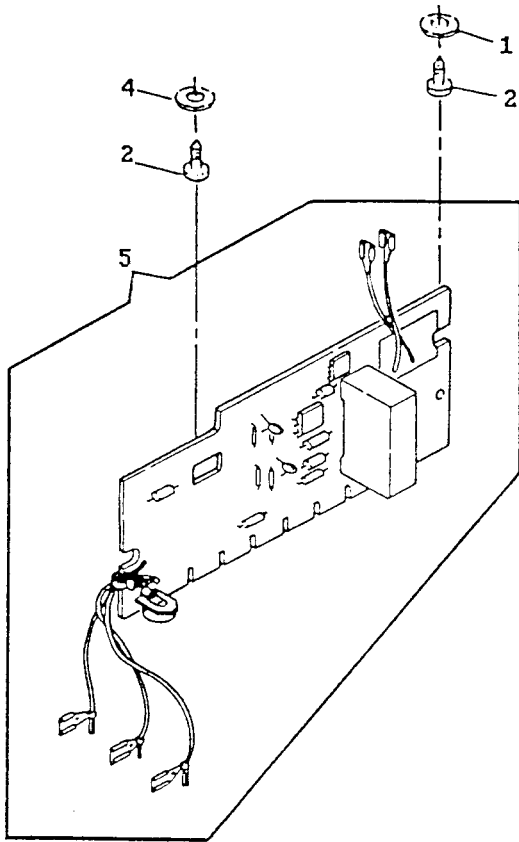
REF. PART NO.	NO.	DESCRIPTION	9	9	9	9
			1	1	1	1
			1	1	1	2
			0	3	7	4
1A	314823-001	LINT AND HEAD SHIELD ASSEMBLY (220/240V) (FOR 9008N304)	X	X	X	X
1B	314823-003	LINT AND HEAD SHIELD ASSEMBLY (120V)	X	X	X	X
2	979203-002	LIGHT ASSEMBLY (EUROPE) (220V)	X	X	X	X
2	979203-003	LIGHT ASSEMBLY (AUSTRALIA) (240V)	X	X	X	X
3	540899	TY-WRAP SELF-LOCKING (ALT:605600-001)	X	X	X	X
4	988728-001	LAMP SOCKET (120V) (US/CANADA)	X	X	X	X
5	113455-003	THREAD TAKE-UP COVER AND LINT/HEAT SHIELD SCREW	X	X	X	X
7	137813-002	SCREW, LINT AND HEAT SHIELD MOUNTING	X	X	X	X
8	194120-021	LIGHT BULB (240V) (ALT:542656-004)	X	X	X	X
8	194120-020	LIGHT BULB (220V) (ALT:542656-003) (FOR 9008N304)	X	X	X	X
8	194120-019	LIGHT BULB (120V) (ALT:542656-005) (DUAL VOLTAGE FOR U.S.A./KOREA/GERMANY & H.K.)	X	X	X	X
10	979585-911	ROCKER SWITCH	X	X	X	X

From the library of: Diamond Needle Corp

ELECTRICAL EQUIPMENT (CONT.)  
 MODEL: 9110 9113 9117 9124

REF. PART NO.	PART NO.	DESCRIPTION	9	9	9	9
			1	1	1	1
			1	1	1	2
			0	3	7	4
1	988547-002	WASHER, P.C. BOARD MOUNTING	X	X	X	X
2	113444-001	SCREW, P.C. BOARD MOUNTING	X	X	X	X
4	988547-001	WASHER, P.C. BOARD MOUNTING	X	X	X	X
5	979584-001	SPEED CONTROL P.C. BOARD ASSEMBLY (120V) (FULL WAVE)	X	X	X	
5	979586-001	SPEED CONTROL P.C. BOARD ASSEMBLY (220/240V) (FULL WAVE)	X	X	X	
5	979612-001	SPEED CONTROL P.C. BOARD ASSEMBLY (220/240V) (SCAND.)	X	X	X	
5	<u>317278-001</u>	SPEED CONTROL P.C. BOARD ASSEMBLY (120V) (U.S.A./CANADA)				X
5	317280-001	SPEED CONTROL P.C. BOARD ASSEMBLY (DUAL VOLTAGE FOR U.S.A. /KOREA /GEMANY & H.K.)	X	X	X	X
5	317366-001	SPEED CONTROL P.C. BOARD ASSEMBLY (220/240V)				X
6	317276	TRANSFORMER (120V/6V)				X
6	317405	TRANSFORMER ASSEMBLY WITH LEAD (220V)				X
6	317411	TRANSFORMER (240V/6V)				X
7	544211-002	TRANSFORMER MOUNTING SCREW				X
8	317277-901	TRANSFORMER MOUNTING PLATE				X
9	113470-004	TRANSFORMER ASSEMBLY MOUNTING SCREW				X
10	317350	EXTENSION LEAD WITH HOUSING PLUGS FOR TRANSFORMER (6V)				X
11	113455-001	SCREW, LIGHT HARNESS	X	X	X	
12	604690-001	SELF-LOCKING NYLON CABLE TIE, LIGHT HARNESS	X	X	X	
13	317270-001	SLIDE SWITCH ASSEMBLY WITH LEADS				X

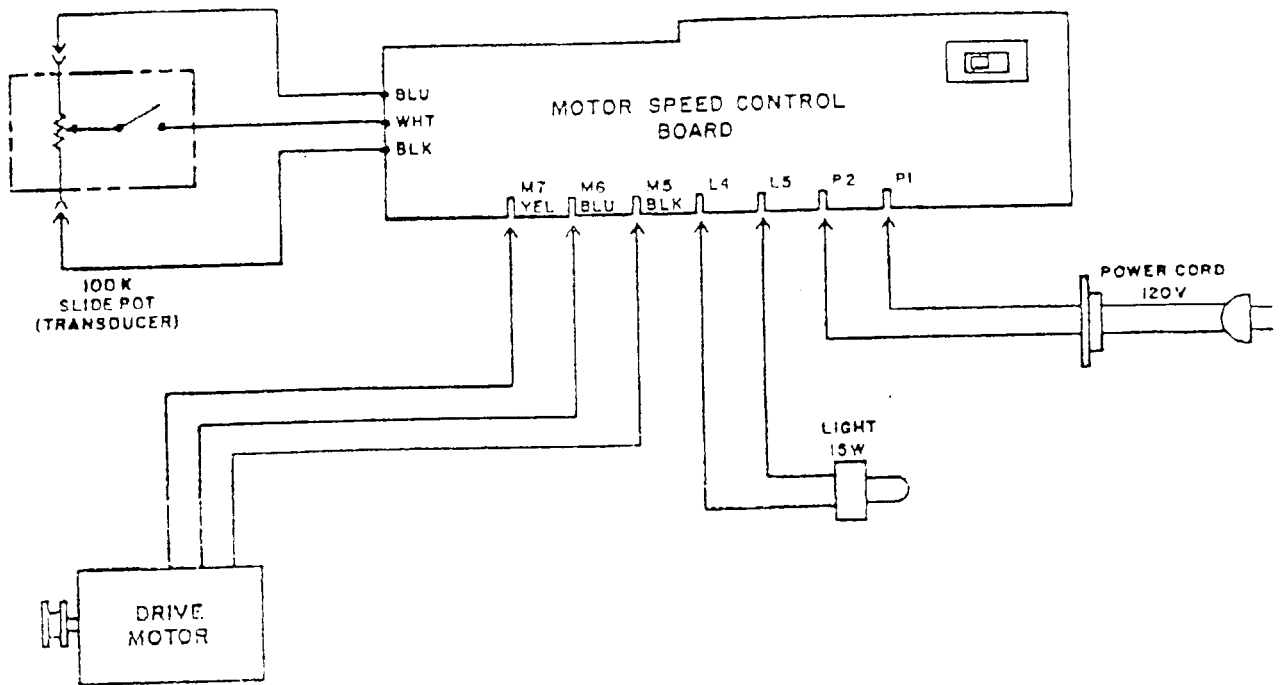
From the library of: Diamond Needle Corp



From the library of: Diamond Needle Corp



wiring layout model 9110



From the library of: Diamond Needle Corp